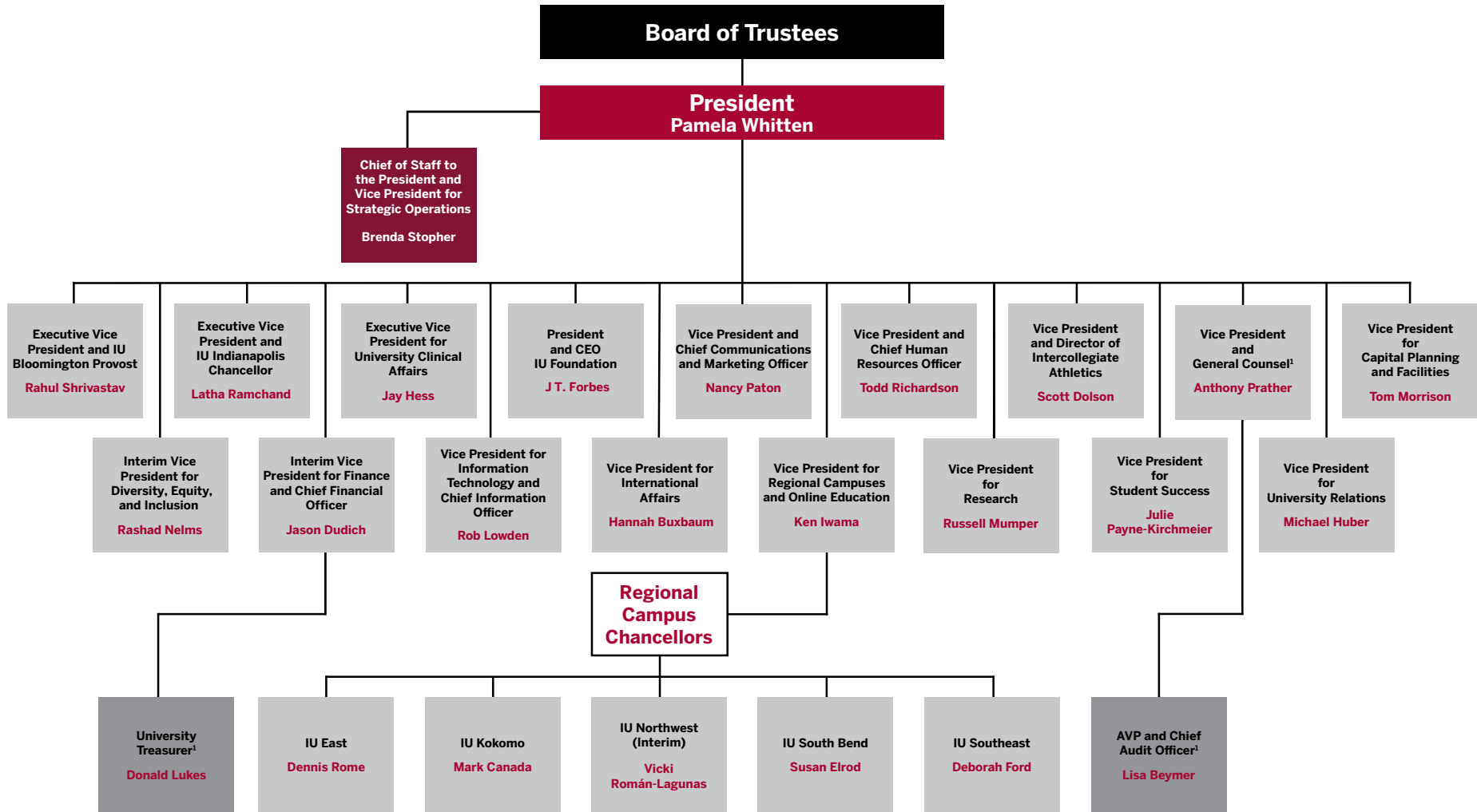


Indiana University

President's Cabinet



¹Also reports to the Board of Trustees

Indiana University

- Board of Trustees
 - President **Pamela Whitten**
 - Chief of Staff to the President and Vice President for Strategic Operations **Brenda Stopher**
 - Executive Vice President and IU Bloomington Provost **Rahul Shrivastav**
 - Executive Vice President and IU Indianapolis Chancellor **Latha Ramchand**
 - Executive Vice President for University Clinical Affairs **Jay Hess**
 - President and CEO, IU Foundation **J T. Forbes**
 - Vice President and Chief Communications and Marketing Officer **Nancy Paton**
 - Vice President and Chief Human Resources Officer **Todd Richardson**
 - Vice President and Director of Intercollegiate Athletics **Scott Dolson**
 - Vice President and General Counsel¹ **Anthony Prather**
 - AVP and Chief Audit Officer¹ **Lisa Beymer**
 - Vice President for Capital Planning and Facilities **Tom Morrison**
 - Interim Vice President for Diversity, Equity, and Inclusion **Rashad Nelms**
 - Interim Vice President for Finance and Chief Financial Officer **Jason Dudich**
 - University Treasurer¹ **Donald Lukes**
 - Vice President for Information Technology and Chief Information Officer **Rob Lowden**
 - Vice President for International Affairs **Hannah Buxbaum**
 - Vice President for Regional Campuses and Online Education **Ken Iwama**
 - Regional Campus Chancellors
 - IU East **Dennis Rome**
 - IU Kokomo **Mark Canada**
 - IU Northwest (Interim) **Vicki Román-Lagunas**
 - IU South Bend **Susan Elrod**
 - IU Southeast **Deborah Ford**
 - Vice President for Research **Russell Mumper**
 - Vice President for Student Success **Julie Payne-Kirchmeier**
 - Vice President for University Relations **Michael Huber**

The President's Cabinet is composed of the vice presidents, the chief of staff, and the president and CEO of the IU Foundation.

¹Also reports to the Board of Trustees