

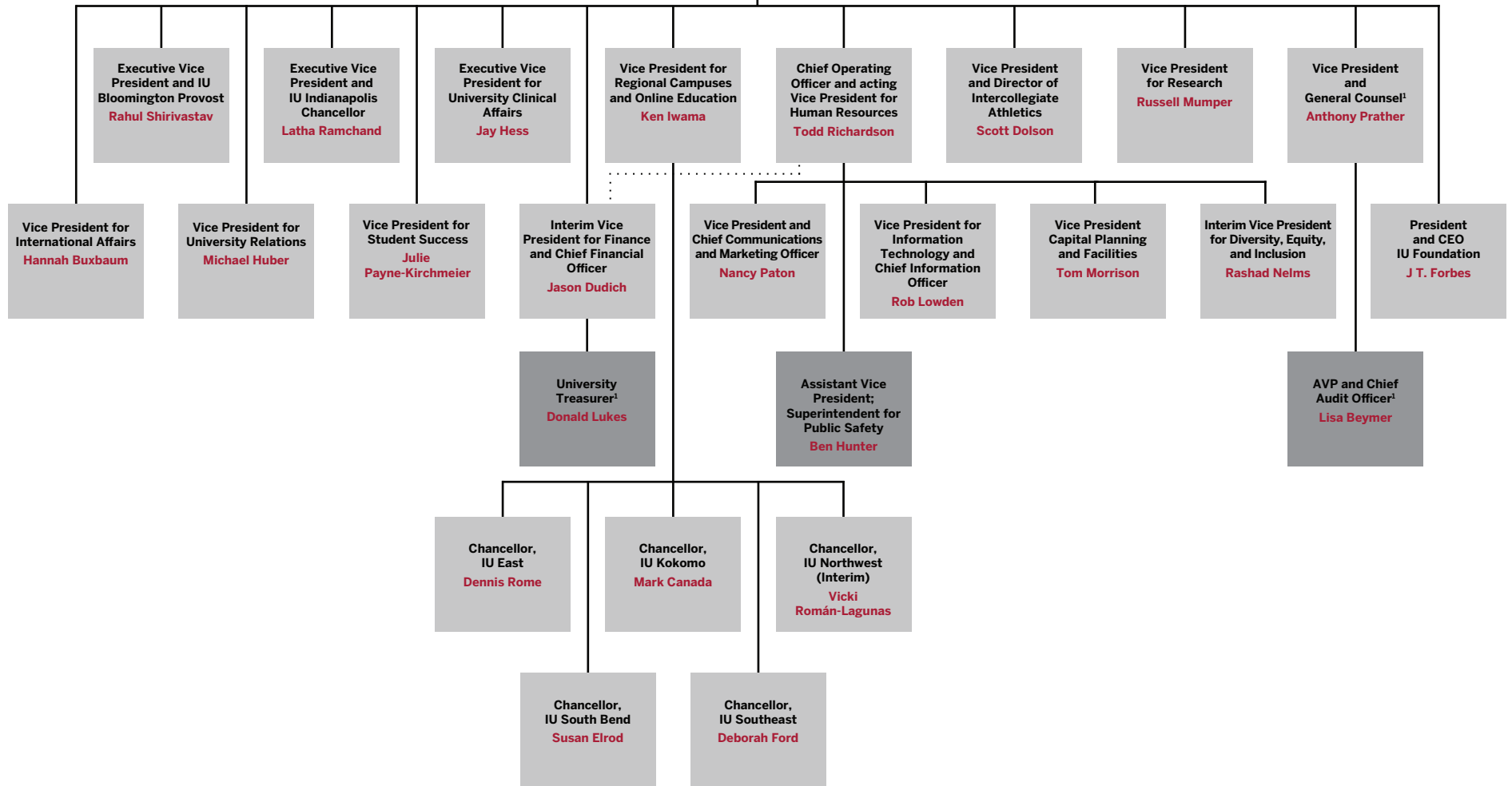
Indiana University

Board of Trustees

**President
Pamela Whitten**

Chief of Staff to the President and Vice President for Strategic Operations
Brenda Stopher

President's Cabinet



¹ Also reports to the Board of Trustees

Indiana University

Board of Trustees

- **President Pamela Whitten**
 - **Chief of Staff to the President and Vice President for Strategic Operations Brenda Stopher**
 - **Chief Operating Officer and acting Vice President for Human Resources Todd Richardson**
 - **Vice President for Information Technology and Chief Information Officer Rob Lowden**
 - **Vice President for Capital Planning and Facilities Tom Morrison**
 - **Interim Vice President for Diversity, Equity, and Inclusion Rashad Nelms**
 - **Vice President and Chief Communications and Marketing Officer Nancy Paton**
 - **Assistant Vice President; Superintendent for Public Safety Ben Hunter**
 - **Executive Vice President and IU Bloomington Provost Rahul Shrivastav**
 - **Executive Vice President and IU Indianapolis Chancellor Latha Ramchand**
 - **Executive Vice President for University Clinical Affairs Jay Hess**
 - **Vice President for Regional Campuses and Online Education Ken Iwama**
 - **Regional Campus Chancellors**
 - **IU East Dennis Rome**
 - **IU Kokomo Mark Canada**
 - **IU Northwest (Interim) Vicki Roman-Lagunas**
 - **IU South Bend Susan Elrod**
 - **IU Southeast Deborah Ford**
 - **Vice President for International Affairs Hannah Buxbaum**
 - **Vice President and Director of Intercollegiate Athletics Scott Dolson**
 - **Interim Vice President for Finance and Chief Financial Officer Jason Dudich**
 - **University Treasurer¹ Donald Lukes**
 - **President and CEO, IU Foundation J T. Forbes**
 - **Vice President for University Relations Michael Huber**
 - **Vice President for Research Russell Mumper**
 - **Vice President for Student Success Julie Payne-Kirchmeier**
 - **Vice President and General Counsel¹ Anthony Prather**
 - **AVP and Chief Audit Officer¹ Lisa Beymer**

The President's Cabinet comprises the chief operating officer, executive vice presidents, vice presidents, and the president and CEO of the IU Foundation.

¹Also reports to the Board of Trustees.