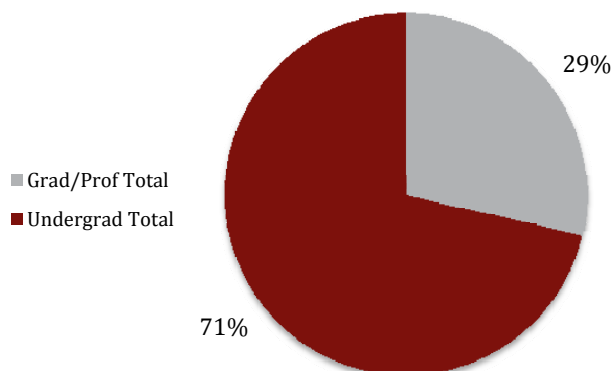
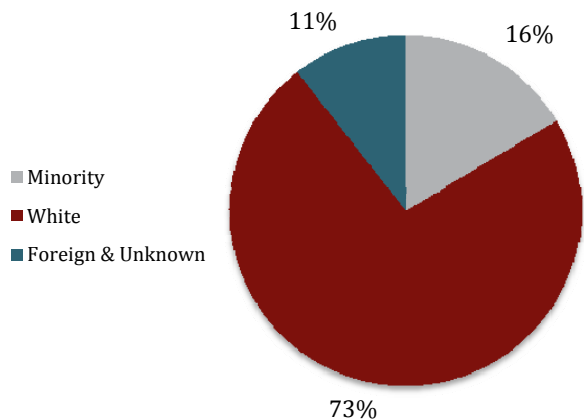


**IU Historical Enrollment  
First Summer Session**

**IU Enrollment By Level**

**IU Enrollment By Ethnicity**

**University Enrollment Summary**

	Count	% of total	% change <sup>1</sup>
Headcount	32,993		1.7%
Credit Hours	149,210.0		1.8%
FTE	10,451.8		1.5%

**Students By Level and Class**

Undergrad Total	23,548	71.4%	4.3%
Degree-seeking	21,809	66.1%	5.0%
Non-Degree	1,739	5.3%	-4.1%
Grad/Prof Total	9,445	28.6%	-4.4%
Grad Degree-seeking	6,716	20.4%	2.0%
Prof Degree-seeking	1,763	5.3%	-3.3%
Non-Degree	966	2.9%	-34.3%

Freshman	1,933	8.9%	9.5%
Sophomore	4,347	19.9%	4.3%
Junior	5,540	25.4%	3.6%
Senior	9,989	45.8%	5.3%

**Undergraduates By Courseload<sup>2</sup>**

FT-UG	8,441	38.7%	4.1%
PT-UG	13,368	61.3%	5.6%

**Sex**

Male	13,924	42.2%	2.5%
Female	19,069	57.8%	1.0%

**Ethnicity**

Hispanic	1,155	3.5%	21.8%
African American	2,759	8.4%	11.2%
American Indian	89	0.3%	-15.2%
Asian American	1,192	3.6%	6.6%
Nat. Haw./Pac. Islnd.	14	0.0%	-6.7%
White	24,080	73.0%	0.5%
Foreign	2,216	6.7%	-2.6%
Unknown	1,265	3.8%	-18.2%
Two or More	223	0.7%	n/a

**Residency**

Resident	25,889	78.5%	2.2%
Non-Resident	7,104	21.5%	-0.3%
Reciprocity <sup>3</sup>	1,000	14.1%	6.6%

<sup>1</sup> Compared with First Summer Session, 2009

<sup>2</sup> Degree-seeking only

<sup>3</sup> Portion of non-resident enrollments that are reciprocity

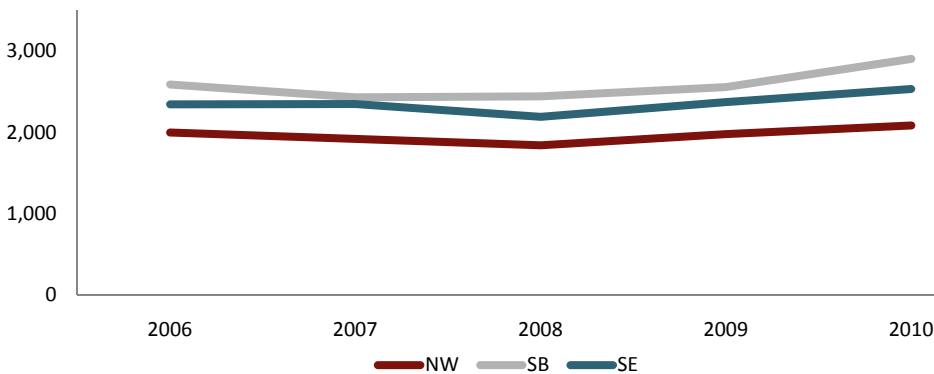
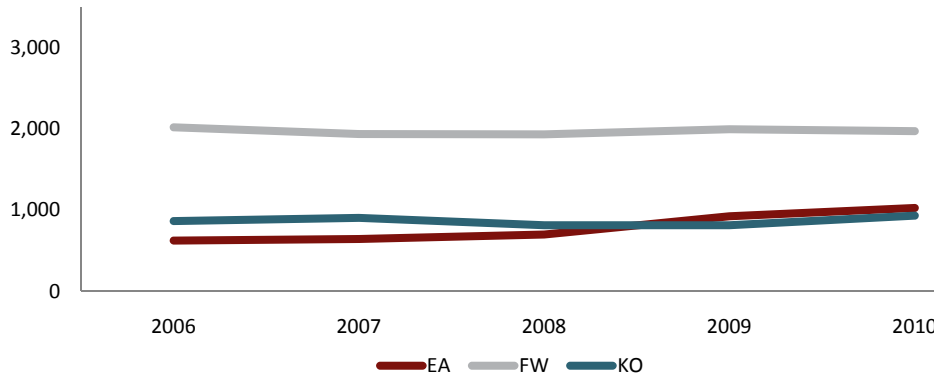
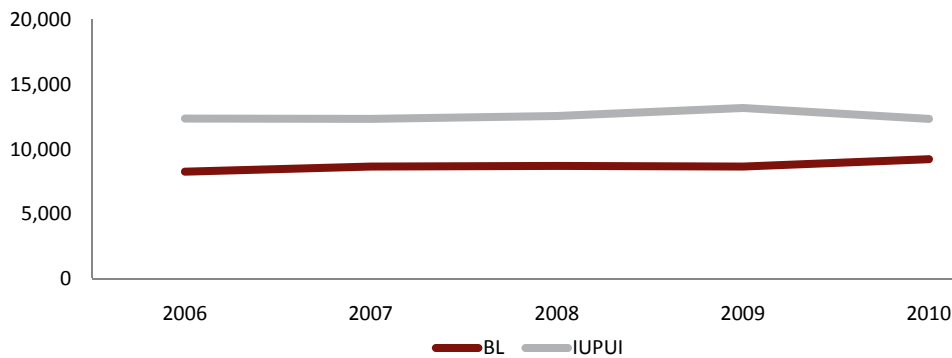
### Campus Enrollment Summary

	Headcount			Credit Hours			FTE		
	Count	%	%	Count	%	%	Count	%	%
		of total	change <sup>1</sup>		of total	change <sup>1</sup>		of total	change <sup>1</sup>
Bloomington	9,214	27.9%	6.5%	42,512.0	28.5%	5.2%	3,012.1	28.8%	7.7%
Indianapolis	12,334	37.4%	-6.3%	56,849.0	38.1%	-6.3%	3,989.7	38.2%	-8.1%
East	1,026	3.1%	10.9%	5,455.0	3.7%	12.5%	368.0	3.5%	12.3%
Fort Wayne*	1,972	6.0%	-1.2%	8,074.0	5.4%	-0.7%	559.4	5.4%	-1.3%
Kokomo	932	2.8%	14.8%	3,864.0	2.6%	15.3%	263.6	2.5%	15.6%
Northwest	2,082	6.3%	5.4%	9,476.0	6.4%	7.1%	656.0	6.3%	6.6%
South Bend	2,901	8.8%	13.5%	12,382.0	8.3%	18.5%	858.4	8.2%	17.7%
Southeast	2,532	7.7%	6.8%	10,598.0	7.1%	8.0%	744.7	7.1%	6.7%

<sup>1</sup> Compared with First Summer Session, 2009

\* IU students only

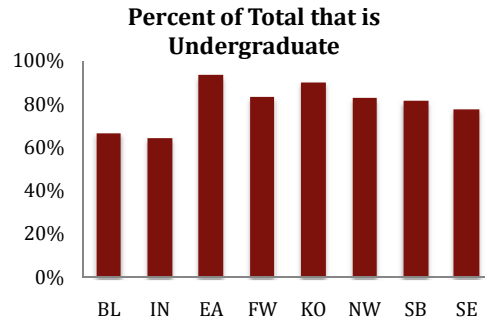
### Campus Historical First Summer Session Enrollment



## Campus Enrollment Summary

### Level of Enrollment (including non-degree)

	Undergraduate			Graduate/Professional		
	Count	% of campus		Count	% of campus	
		total	change <sup>1</sup>		total	change <sup>1</sup>
Bloomington	6,145	66.7%	-4.8%	3,069	33.3%	39.6%
Indianapolis	7,919	64.2%	4.5%	4,415	35.8%	-21.0%
East	956	93.2%	11.9%	70	6.8%	-1.4%
Fort Wayne*	1,644	83.4%	0.6%	328	16.6%	-9.4%
Kokomo	838	89.9%	14.0%	94	10.1%	22.1%
Northwest	1,723	82.8%	9.3%	359	17.2%	-10.0%
South Bend	2,360	81.4%	17.5%	541	18.6%	-1.3%
Southeast	1,963	77.5%	13.2%	569	22.5%	-10.5%



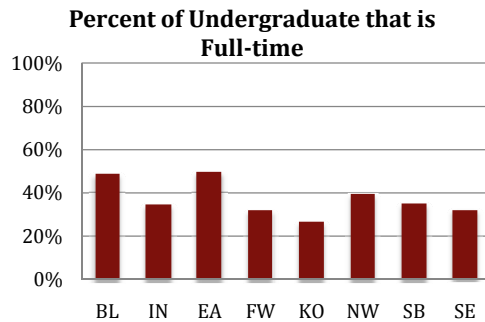
### Undergraduates by Class<sup>†</sup>

	Freshman			Sophomore			Junior			Senior		
	Count	% of campus		Count	% of campus		Count	% of campus		Count	% of campus	
		total	change <sup>1</sup>		total	change <sup>1</sup>		total	change <sup>1</sup>		total	change <sup>1</sup>
Bloomington	60	1.0%	-9.1%	661	11.4%	-3.2%	1,849	31.9%	-10.3%	3,225	55.7%	-0.8%
Indianapolis	446	6.2%	-2.6%	1,559	21.8%	5.1%	1,688	23.6%	8.7%	3,470	48.4%	5.4%
East	99	10.8%	0.0%	194	21.1%	8.4%	264	28.7%	18.4%	362	39.4%	13.1%
Fort Wayne*	289	14.7%	3.2%	384	19.5%	-3.0%	316	16.0%	15.3%	598	30.3%	-3.9%
Kokomo	123	13.2%	32.3%	178	19.1%	14.1%	160	17.2%	1.9%	306	32.8%	15.9%
Northwest	342	16.4%	30.5%	451	21.7%	-7.0%	321	15.4%	6.3%	530	25.5%	18.3%
South Bend	367	12.7%	15.4%	508	17.5%	19.2%	427	14.7%	31.4%	740	25.5%	17.5%
Southeast	207	8.2%	8.9%	412	16.3%	14.4%	515	20.3%	14.4%	758	29.9%	15.0%

<sup>†</sup> Degree-seeking only

### Undergraduate Enrollment Status<sup>†</sup>

	Full-time Undergrad			Part-time Undergrad		
	Count	% of campus		Count	% of campus	
		total	change <sup>1</sup>		total	change <sup>1</sup>
Bloomington	2,828	48.8%	-10.6%	2,967	51.2%	2.5%
Indianapolis	2,473	34.5%	7.1%	4,690	65.5%	4.8%
East	457	49.7%	15.4%	462	50.3%	8.7%
Fort Wayne*	504	31.8%	5.9%	1,083	68.2%	-1.2%
Kokomo	204	26.6%	3.6%	563	73.4%	19.0%
Northwest	648	39.4%	17.2%	996	60.6%	5.5%
South Bend	719	35.2%	36.4%	1,323	64.8%	12.9%
Southeast	608	32.1%	26.1%	1,284	67.9%	9.1%



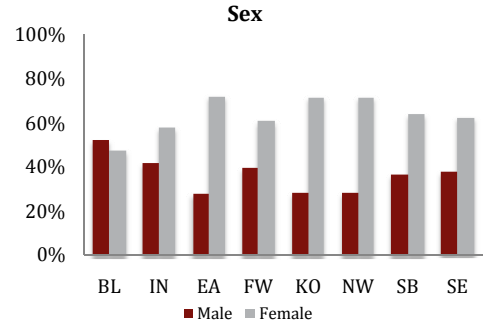
<sup>1</sup> Compared with First Summer Session, 2009

\* IU students only

**Campus Enrollment Summary**

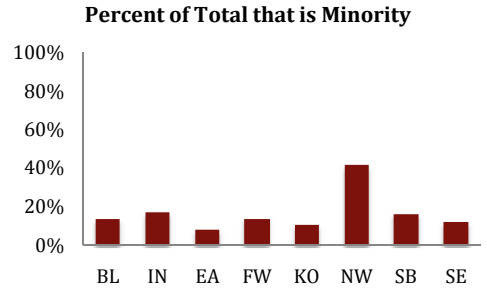
**Sex**

	Male			Female		
	Count	% of campus		Count	% of campus	
		total	change <sup>1</sup>		total	change <sup>1</sup>
Bloomington	4,834	52.5%	11.4%	4,380	47.5%	1.6%
Indianapolis	5,158	41.8%	-9.0%	7,176	58.2%	-4.3%
East	288	28.1%	18.5%	738	71.9%	8.2%
Fort Wayne*	776	39.4%	4.2%	1,196	60.6%	-4.4%
Kokomo	265	28.4%	8.6%	667	71.6%	17.4%
Northwest	593	28.5%	-0.7%	1,489	71.5%	8.0%
South Bend	1,055	36.4%	20.0%	1,846	63.6%	10.0%
Southeast	955	37.7%	10.5%	1,577	62.3%	4.7%



**Ethnicity**

	Domestic Minority			Other		
	Count	% of campus		Count	% of campus	
		total	change <sup>1</sup>		total	change <sup>1</sup>
Bloomington	1,241	13.5%	16.9%	7,973	86.5%	5.1%
Indianapolis	2,101	17.0%	7.4%	10,233	83.0%	-8.7%
East	82	8.0%	46.4%	944	92.0%	8.6%
Fort Wayne*	272	13.8%	19.8%	1,700	86.2%	-3.9%
Kokomo	98	10.5%	46.3%	834	89.5%	11.9%
Northwest	861	41.4%	18.8%	1,221	58.6%	-2.4%
South Bend	474	16.3%	43.6%	2,427	83.7%	9.0%
Southeast	303	12.0%	24.2%	2,229	88.0%	4.8%



**Residency**

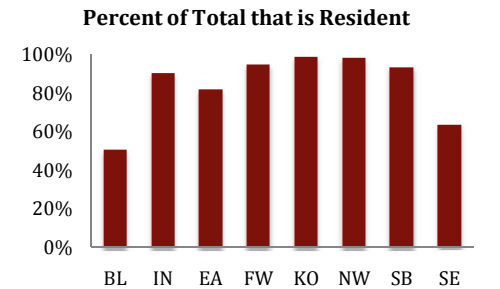
	Hispanic/Latino			African American		
	Count	% of campus		Count	% of campus	
		total	change <sup>1</sup>		total	change <sup>1</sup>
Bloomington	260	2.8%	13.5%	494	5.4%	10.5%
Indianapolis	327	2.7%	17.2%	1,079	8.7%	1.9%
East	17	1.7%	41.7%	48	4.7%	26.3%
Fort Wayne*	83	4.2%	22.1%	126	6.4%	8.6%
Kokomo	27	2.9%	50.0%	57	6.1%	58.3%
Northwest	258	12.4%	26.5%	528	25.4%	17.6%
South Bend	135	4.7%	35.0%	250	8.6%	35.1%
Southeast	48	1.9%	26.3%	177	7.0%	17.2%

	Resident		
	Count	% of campus	
		total	change <sup>1</sup>
Bloomington	4,665	50.6%	-3.4%
Indianapolis	11,191	90.7%	-0.1%
East	841	82.0%	9.5%
Fort Wayne*	1,875	95.1%	-1.0%
Kokomo	926	99.4%	14.5%
Northwest	2,051	98.5%	5.8%
South Bend	2,725	93.9%	14.3%
Southeast	1,615	63.8%	7.2%

	American Indian			Asian American		
	Count	% of campus		Count	% of campus	
		total	change <sup>1</sup>		total	change <sup>1</sup>
Bloomington	25	4.5%	-7.4%	416	4.5%	16.2%
Indianapolis	26	4.7%	-3.7%	577	4.7%	-0.9%
East	2	0.8%	-33.3%	8	0.8%	166.7%
Fort Wayne*	8	2.1%	-11.1%	42	2.1%	23.5%
Kokomo	3	0.6%	-40.0%	6	0.6%	-25.0%
Northwest	7	2.7%	-36.4%	56	2.7%	-3.4%
South Bend	11	1.6%	0.0%	46	1.6%	39.4%
Southeast	7	1.6%	-41.7%	41	1.6%	-2.4%

	Non-resident		
	Count	% of campus	
		total	change <sup>1</sup>
Bloomington	4,549	49.4%	19.0%
Indianapolis	1,143	9.3%	-41.9%
East	185	18.0%	17.8%
Fort Wayne*	97	4.9%	-4.9%
Kokomo	6	0.6%	100.0%
Northwest	31	1.5%	-16.2%
South Bend	176	6.1%	2.3%
Southeast	917	36.2%	6.3%

	Native Hawaiian/Alaska Native			Two or More		
	Count	% of campus		Count	% of campus	
		total	change <sup>1</sup>		total	change <sup>1</sup>
Bloomington	2	0.0%	100.0%	44	0.5%	n/a
Indianapolis	6	0.0%	-33.3%	86	0.7%	n/a
East	1	0.1%	n/a	6	0.6%	n/a
Fort Wayne*	0	0.0%	n/a	13	0.7%	n/a
Kokomo	0	0.0%	n/a	5	0.5%	n/a
Northwest	0	0.0%	-100.0%	12	0.6%	n/a
South Bend	3	0.1%	200.0%	29	1.0%	n/a
Southeast	2	0.1%	100.0%	28	1.1%	n/a



<sup>1</sup> Compared with First Summer Session, 2009

\* IU students only