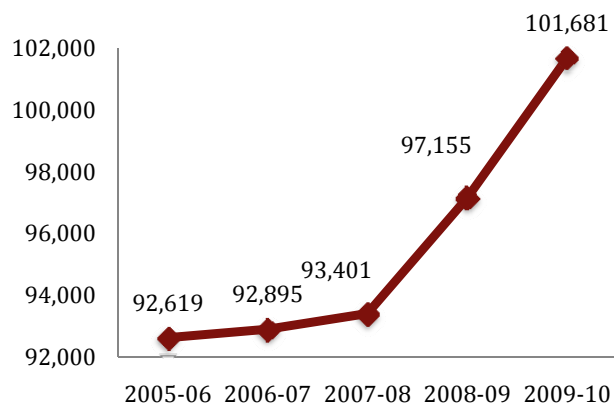
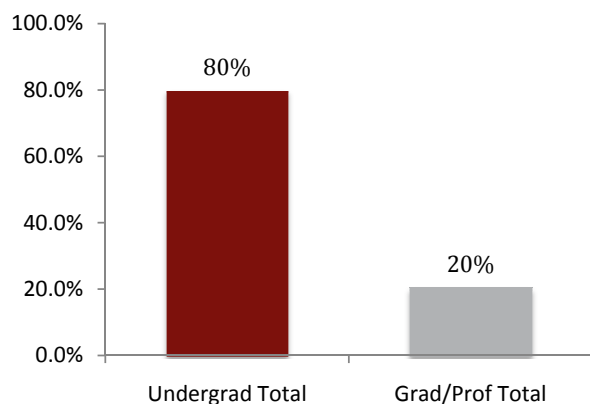
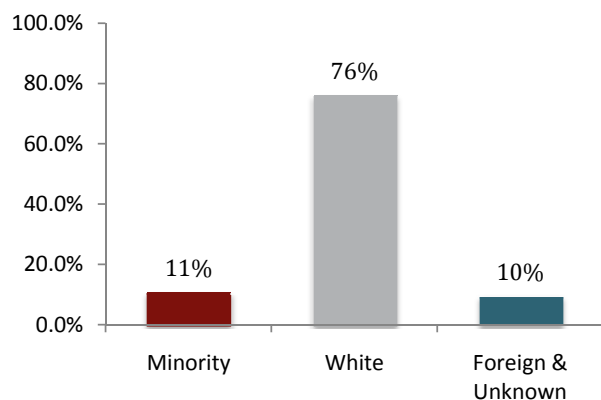


**IU Historical Enrollment
Second Semester**

IU Enrollment By Level

IU Enrollment By Ethnicity

University Enrollment Summary

	Count	% of total	% change ¹
Headcount	101,681		4.7%
Credit Hours	1,180,040.5		5.3%
FTE	80,721.8		5.2%

Students By Level and Class

Undergrad Total	80,945	79.6%	5.7%
Degree-seeking	76,949	75.7%	5.1%
Non-Degree	3,996	3.9%	17.7%
Grad/Prof Total	20,736	20.4%	0.8%
Grad Degree-seeking	15,350	15.1%	3.3%
Prof Degree-seeking	3,682	3.6%	4.2%
Non-Degree	1,704	1.7%	-21.4%

Freshman	17,940	23.3%	2.0%
Sophomore	18,420	23.9%	3.4%
Junior	16,076	20.9%	5.9%
Senior	24,513	31.9%	8.4%

Undergraduates By Courseload²

FT-UG	60,823	79.0%	6.2%
PT-UG	16,126	21.0%	1.4%

Sex

Male	44,679	43.9%	5.9%
Female	57,002	56.1%	3.7%

Ethnicity & Race

Hispanic/Latino	3,374	3.3%	13.9%
African American	7,359	7.2%	9.5%
Am. Ind./Alaska Nat.	308	0.3%	1.7%
Asian American	3,236	3.2%	7.7%
Nat. Haw./Pac. Islnd	64	0.1%	56.1%
White	77,390	76.1%	2.9%
Foreign	5,923	5.8%	6.3%
Unknown	3,801	3.7%	13.5%
Two or More Races	226	0.2%	n/a

Residency

Resident	77,806	76.5%	4.9%
Non-Resident	23,875	23.5%	4.0%
Reciprocity ³	2,317	9.7%	16.1%

¹ Compared with Second Semester, 2008-09

² Degree-seeking only

³ Portion of non-resident enrollments that are reciprocity

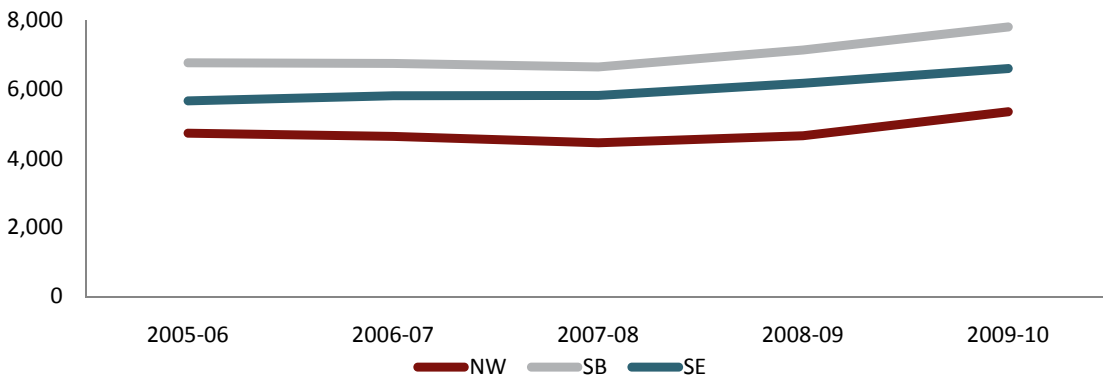
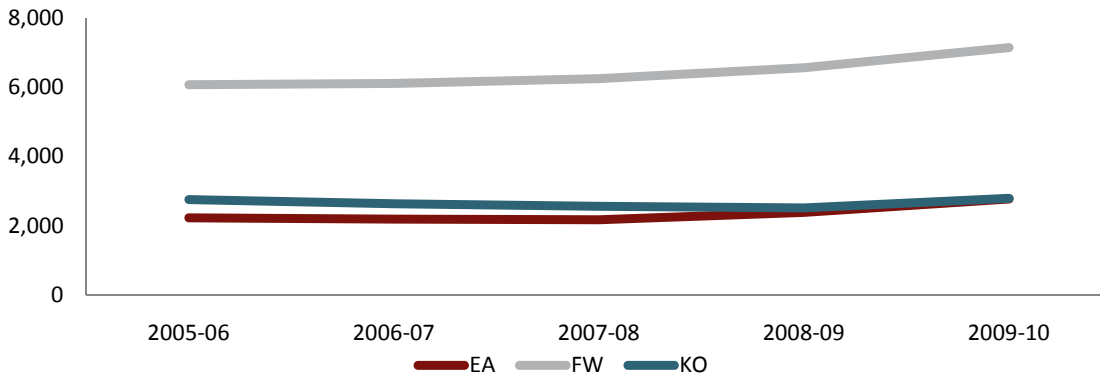
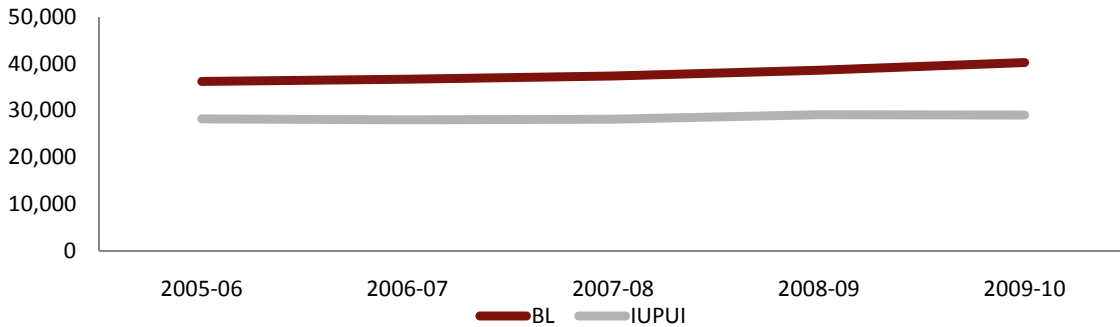
Campus Enrollment Summary

	Headcount			Credit Hours			FTE		
	Count	%	%	Count	%	%	Count	%	%
		of total	change ¹		of total	change ¹		of total	change ¹
Bloomington	40,211	39.5%	4.2%	528,326.0	44.8%	3.6%	36,369.3	45.1%	3.7%
Indianapolis	29,000	28.5%	-0.4%	327,612.5	27.8%	2.2%	22,385.0	27.7%	1.7%
East	2,769	2.7%	16.2%	28,003.0	2.4%	16.5%	1,877.4	2.3%	16.7%
Fort Wayne*	7,148	7.0%	8.8%	73,238.0	6.2%	9.0%	4,931.9	6.1%	8.9%
Kokomo	2,788	2.7%	11.1%	27,711.0	2.3%	12.3%	1,865.2	2.3%	12.2%
Northwest	5,349	5.3%	14.9%	54,624.0	4.6%	17.2%	3,708.6	4.6%	16.8%
South Bend	7,812	7.7%	9.4%	74,880.0	6.3%	11.1%	5,076.2	6.3%	10.8%
Southeast	6,604	6.5%	7.0%	65,646.0	5.6%	9.7%	4,443.7	5.5%	9.6%

¹ Compared with Second Semester, 2008-09

* IU students only

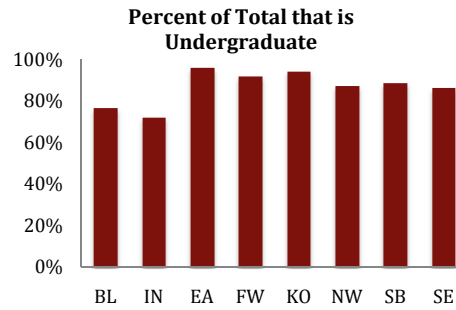
Campus Historical Second Semester Enrollment



Campus Enrollment Summary

Level of Enrollment (including non-degree)

	Undergraduate			Graduate/Professional		
	Count	% of campus		Count	% of campus	
		total	% change ¹		total	% change ¹
Bloomington	30,892	76.8%	2.6%	9,319	23.2%	9.9%
Indianapolis	20,886	72.0%	2.5%	8,114	28.0%	-7.2%
East	2,663	96.2%	15.8%	106	3.8%	27.7%
Fort Wayne*	6,569	91.9%	9.7%	579	8.1%	0.0%
Kokomo	2,631	94.4%	11.6%	157	5.6%	3.3%
Northwest	4,678	87.5%	18.0%	671	12.5%	-2.8%
South Bend	6,920	88.6%	11.3%	892	11.4%	-3.6%
Southeast	5,706	86.4%	8.5%	898	13.6%	-1.8%



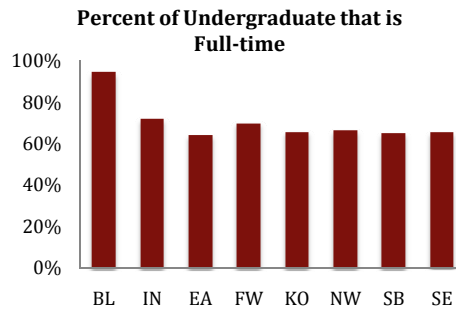
Undergraduates by Class[†]

	Freshman			Sophomore			Junior			Senior		
	Count	% of campus		Count	% of campus		Count	% of campus		Count	% of campus	
		total	% change ¹		total	% change ¹		total	% change ¹		total	% change ¹
Bloomington	5,653	18.6%	-6.7%	7,510	24.7%	2.9%	7,078	23.3%	0.6%	10,181	33.5%	9.8%
Indianapolis	3,861	19.5%	-5.8%	4,497	22.7%	-1.4%	4,241	21.4%	8.3%	7,198	36.4%	5.6%
East	617	25.9%	8.2%	547	22.9%	5.6%	535	22.4%	31.8%	687	28.8%	15.9%
Fort Wayne*	2,164	30.3%	16.0%	1,359	19.0%	2.7%	889	12.4%	0.7%	1,654	23.1%	10.1%
Kokomo	647	23.2%	16.2%	540	19.4%	18.2%	407	14.6%	5.2%	674	24.2%	0.3%
Northwest	1,604	30.0%	24.1%	1,172	21.9%	10.0%	667	12.5%	13.8%	999	18.7%	16.0%
South Bend	1,891	24.2%	9.2%	1,470	18.8%	4.6%	1,120	14.3%	22.8%	1,585	20.3%	8.4%
Southeast	1,503	22.8%	6.4%	1,325	20.1%	11.7%	1,139	17.2%	8.0%	1,535	23.2%	7.3%

[†] Degree-seeking only

Undergraduate Enrollment Status[†]

	Full-time Undergrad			Part-time Undergrad		
	Count	% of campus		Count	% of campus	
		total	% change ¹		total	% change ¹
Bloomington	28,836	94.8%	2.9%	1,586	5.2%	-3.9%
Indianapolis	14,247	72.0%	3.8%	5,550	28.0%	-2.1%
East	1,524	63.9%	12.7%	862	36.1%	17.3%
Fort Wayne*	4,231	69.7%	10.4%	1,835	30.3%	5.5%
Kokomo	1,489	65.7%	18.2%	779	34.3%	-4.2%
Northwest	2,941	66.2%	21.9%	1,501	33.8%	7.8%
South Bend	3,947	65.1%	13.6%	2,119	34.9%	4.0%
Southeast	3,608	65.6%	12.0%	1,894	34.4%	1.7%



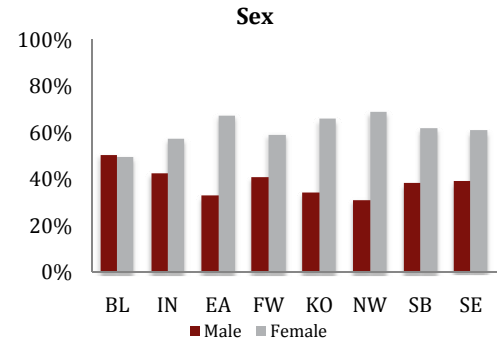
¹ Compared with Second Semester, 2008-09

* IU students only

Campus Enrollment Summary

Sex

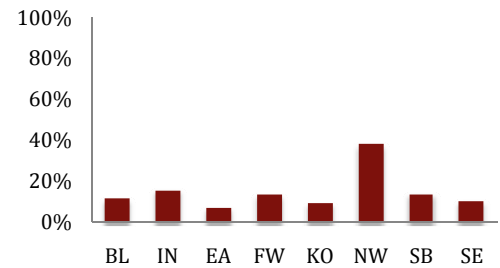
	Male			Female		
	Count	% of campus		Count	% of campus	
		total	change ¹		total	change ¹
Bloomington	20,283	50.4%	7.1%	19,928	49.6%	1.3%
Indianapolis	12,387	42.7%	-1.5%	16,613	57.3%	0.4%
East	904	32.6%	19.7%	1,865	67.4%	14.6%
Fort Wayne*	2,910	40.7%	9.1%	4,238	59.3%	8.7%
Kokomo	955	34.3%	16.0%	1,833	65.7%	8.7%
Northwest	1,671	31.2%	15.7%	3,678	68.8%	14.5%
South Bend	2,982	38.2%	13.9%	4,830	61.8%	6.8%
Southeast	2,587	39.2%	8.9%	4,017	60.8%	5.8%



Ethnicity

	Domestic Minority			Other		
	Count	% of campus		Count	% of campus	
		total	change ¹		total	change ¹
Bloomington	4,695	11.7%	8.6%	35,516	88.3%	3.6%
Indianapolis	4,609	15.9%	4.1%	24,391	84.1%	-1.2%
East	194	7.0%	18.3%	2,575	93.0%	16.1%
Fort Wayne*	964	13.5%	35.6%	6,184	86.5%	5.6%
Kokomo	264	9.5%	21.7%	2,524	90.5%	10.1%
Northwest	2,055	38.4%	17.0%	3,294	61.6%	13.6%
South Bend	1,087	13.9%	24.7%	6,725	86.1%	7.3%
Southeast	699	10.6%	25.3%	5,905	89.4%	5.2%

Percent of Total that is Minority



	Hispanic/Latino			African American		
	Count	% of campus		Count	% of campus	
		total	change ¹		total	change ¹
Bloomington	1,059	2.6%	6.8%	1,758	4.4%	4.3%
Indianapolis	791	2.7%	8.8%	2,575	8.9%	2.1%
East	37	1.3%	-7.5%	120	4.3%	17.6%
Fort Wayne*	258	3.6%	34.4%	536	7.5%	36.4%
Kokomo	58	2.1%	38.1%	146	5.2%	9.0%
Northwest	680	12.7%	15.3%	1,239	23.2%	17.3%
South Bend	369	4.7%	28.1%	573	7.3%	23.0%
Southeast	122	1.8%	32.6%	412	6.2%	14.1%

Residency

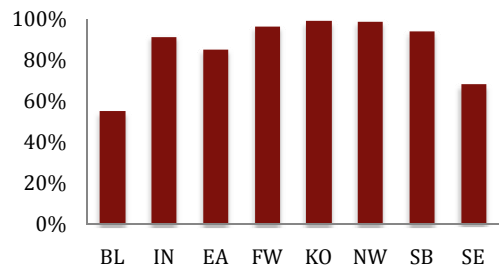
	Resident		
	Count	% of campus	
		total	change ¹
Bloomington	22,120	55.0%	2.1%
Indianapolis	26,572	91.6%	2.1%
East	2,360	85.2%	15.2%
Fort Wayne*	6,886	96.3%	8.8%
Kokomo	2,765	99.2%	11.0%
Northwest	5,283	98.8%	14.8%
South Bend	7,324	93.8%	9.4%
Southeast	4,496	68.1%	3.5%

	American Indian			Asian American		
	Count	% of campus		Count	% of campus	
		total	change ¹		total	change ¹
Bloomington	112	0.3%	-4.3%	1,688	4.2%	11.5%
Indianapolis	71	0.2%	-1.4%	1,090	3.8%	-0.6%
East	7	0.3%	75.0%	21	0.8%	16.7%
Fort Wayne*	27	0.4%	12.5%	125	1.7%	22.5%
Kokomo	9	0.3%	-35.7%	35	1.3%	45.8%
Northwest	19	0.4%	-17.4%	100	1.9%	17.6%
South Bend	31	0.4%	34.8%	82	1.0%	-9.9%
Southeast	32	0.5%	23.1%	95	1.4%	28.4%

	Non-resident		
	Count	% of campus	
		total	change ¹
Bloomington	18,091	45.0%	6.9%
Indianapolis	2,428	8.4%	-21.8%
East	409	14.8%	22.5%
Fort Wayne*	262	3.7%	10.5%
Kokomo	23	0.8%	27.8%
Northwest	66	1.2%	17.9%
South Bend	488	6.2%	8.9%
Southeast	2,108	31.9%	15.4%

	Native Hawaiian/Alaska Native			Two or More		
	Count	% of campus		Count	% of campus	
		total	change ¹		total	change ¹
Bloomington	31	0.1%	121.4%	47	0.1%	n/a
Indianapolis	13	0.0%	8.3%	69	0.2%	n/a
East	1	0.0%	n/a	8	0.3%	n/a
Fort Wayne*	0	0.0%	n/a	18	0.3%	n/a
Kokomo	4	0.1%	33.3%	12	0.4%	n/a
Northwest	4	0.1%	33.3%	13	0.2%	n/a
South Bend	5	0.1%	25.0%	27	0.3%	n/a
Southeast	6	0.1%	20.0%	32	0.5%	n/a

Percent of Total that is Resident



¹ Compared with Second Semester, 2008-09

* IU students only