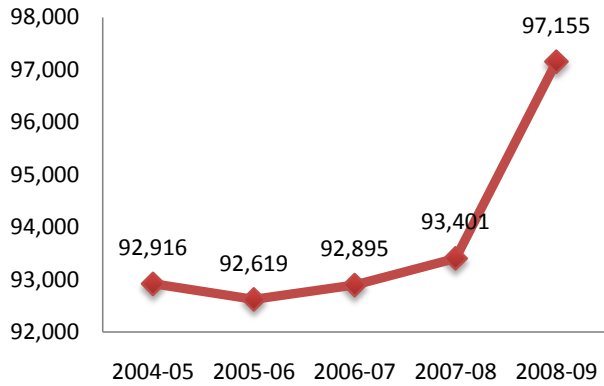
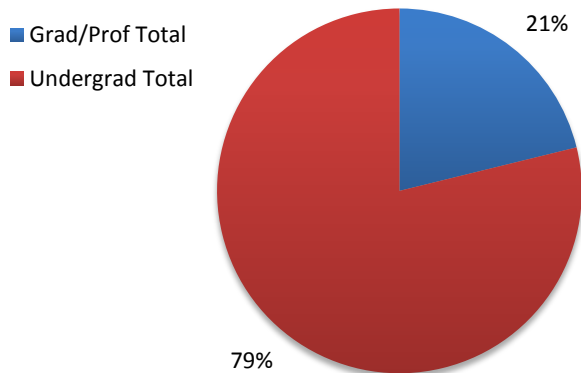
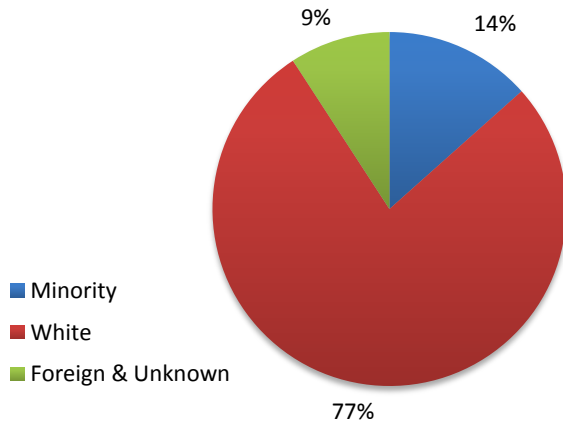


**IU Historical Enrollment
Second Semester**

IU Enrollment By Level

IU Enrollment By Ethnicity

University Enrollment Summary

	Count	% of total	% change ¹
Headcount	97,155		4.0%
Credit Hours	1,120,210.0		4.9%
FTE	76,720.5		4.9%

Students By Level and Class

Undergrad Total	76,590	78.8%	4.8%
Degree-seeking	73,195	75.3%	4.6%
Non-Degree	3,395	3.5%	8.5%
Grad/Prof Total	20,565	21.2%	1.2%
Grad Degree-seeking	14,864	15.3%	2.7%
Prof Degree-seeking	3,534	3.6%	2.8%
Non-Degree	2,167	2.2%	-9.6%
Freshman	17,589	24.0%	4.5%
Sophomore	17,815	24.3%	1.6%
Junior	15,179	20.7%	5.8%
Senior	22,612	30.9%	6.5%

Undergraduates By Courseload²

FT-UG	57,295	78.3%	6.5%
PT-UG	15,900	21.7%	-1.7%

Sex

Male	42,193	43.4%	5.4%
Female	54,962	56.6%	3.0%

Ethnicity

African American	6,718	6.9%	4.5%
American Indian	303	0.3%	-1.0%
Asian American	3,046	3.1%	10.9%
Hispanic	2,963	3.0%	8.8%
White	75,204	77.4%	2.5%
Foreign	5,573	5.7%	8.9%
Unknown	3,348	3.4%	24.8%

Residency

Resident	74,205	76.4%	3.1%
Non-Resident	22,950	23.6%	7.1%
Reciprocity ³	1,995	8.7%	7.6%

¹ Compared with Second Semester, 2007-08

² Degree-seeking only

³ Portion of non-resident enrollments that are reciprocity

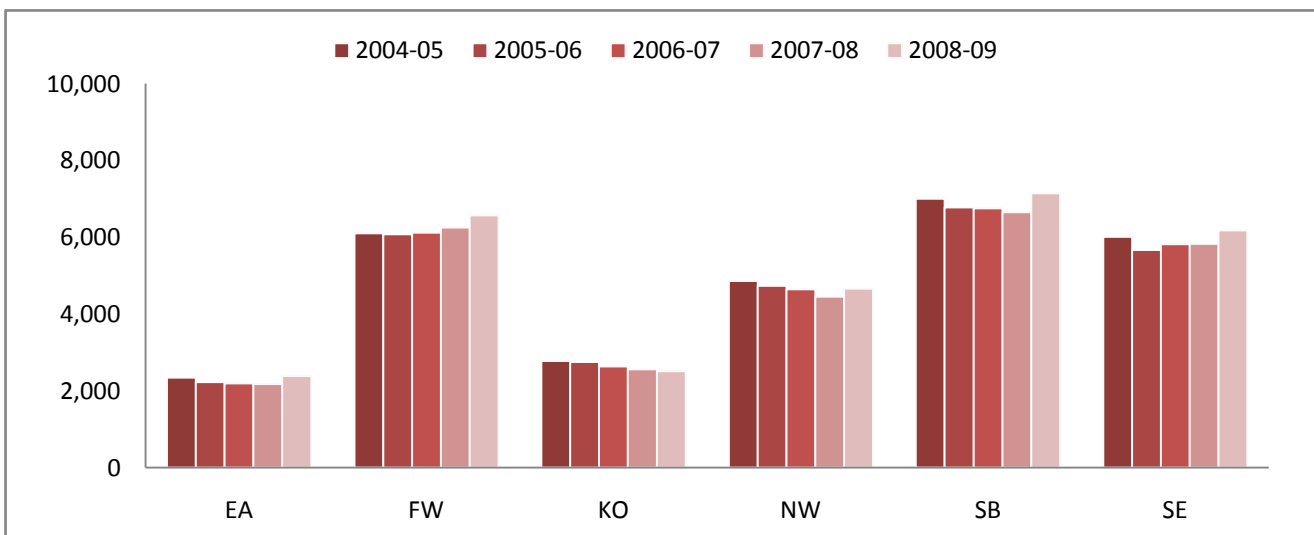
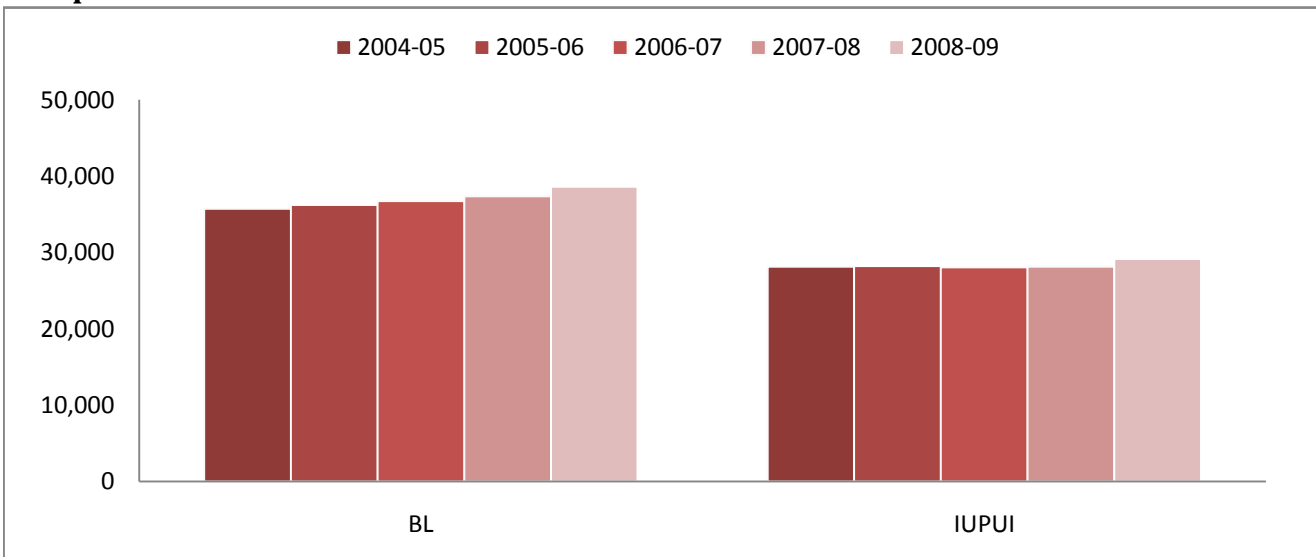
Campus Enrollment Summary

	Headcount			Credit Hours			FTE		
	Count	%	%	Count	%	%	Count	%	%
		of total	change ¹		of total	change ¹		of total	change ¹
Bloomington	38,599	39.7%	3.3%	510,065.5	45.5%	4.3%	35,071.3	45.7%	4.2%
Indianapolis	29,126	30.0%	3.5%	320,405.5	28.6%	4.0%	22,018.1	28.7%	4.0%
East	2,382	2.5%	9.7%	24,028.0	2.1%	13.1%	1,609.2	2.1%	13.3%
Fort Wayne*	6,567	6.8%	5.0%	67,185.0	6.0%	6.2%	4,528.8	5.9%	6.0%
Kokomo	2,510	2.6%	-2.0%	24,684.0	2.2%	-1.1%	1,662.8	2.2%	-0.9%
Northwest	4,656	4.8%	4.7%	46,589.0	4.2%	7.9%	3,174.2	4.1%	7.9%
South Bend	7,142	7.4%	7.3%	67,427.0	6.0%	8.1%	4,579.6	6.0%	7.7%
Southeast	6,173	6.4%	6.0%	59,826.0	5.3%	7.4%	4,055.7	5.3%	7.4%

¹ Compared with Second Semester, 2007-08

* IU students only

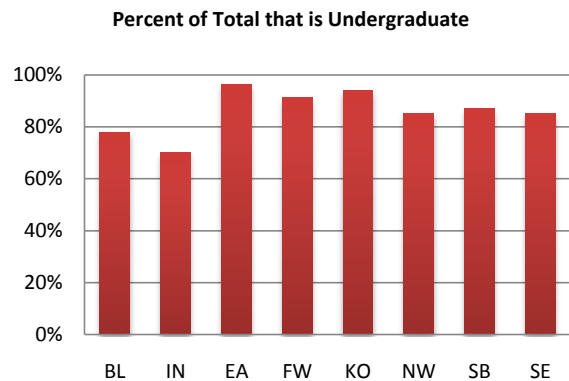
Campus Historical Second Semester Enrollment



Campus Enrollment Summary

Level of Enrollment (including non-degree)

	Undergraduate			Graduate/Professional		
	Count	% of campus		Count	% of campus	
		total	% change ¹		total	% change ¹
Bloomington	30,119	78.0%	4.8%	8,480	22.0%	-1.6%
Indianapolis	20,384	70.0%	2.9%	8,742	30.0%	4.9%
East	2,299	96.5%	9.1%	83	3.5%	29.7%
Fort Wayne*	5,988	91.2%	6.2%	579	8.8%	-6.2%
Kokomo	2,358	93.9%	-2.2%	152	6.1%	1.3%
Northwest	3,966	85.2%	4.8%	690	14.8%	4.1%
South Bend	6,217	87.0%	10.1%	925	13.0%	-8.2%
Southeast	5,259	85.2%	5.8%	914	14.8%	6.7%



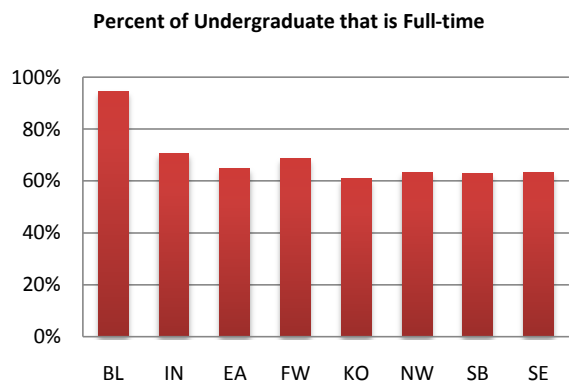
Undergraduates by Class[†]

	Freshman			Sophomore			Junior			Senior		
	Count	% of campus		Count	% of campus		Count	% of campus		Count	% of campus	
		total	% change ¹		total	% change ¹		total	% change ¹		total	% change ¹
Bloomington	6,061	20.4%	1.9%	7,299	24.6%	0.2%	7,033	23.7%	7.5%	9,275	31.3%	10.3%
Indianapolis	4,099	21.1%	0.4%	4,561	23.5%	3.8%	3,917	20.2%	5.7%	6,817	35.2%	2.4%
East	570	27.3%	1.4%	518	24.8%	6.8%	406	19.5%	10.0%	593	28.4%	23.8%
Fort Wayne*	1,866	28.4%	7.9%	1,323	20.1%	0.2%	883	13.4%	-2.8%	1,502	22.9%	5.2%
Kokomo	557	22.2%	-6.5%	457	18.2%	-25.2%	387	15.4%	-5.4%	672	26.8%	21.7%
Northwest	1,292	27.7%	11.8%	1,065	22.9%	6.6%	586	12.6%	0.3%	861	18.5%	-1.7%
South Bend	1,732	24.3%	12.2%	1,406	19.7%	7.2%	912	12.8%	8.7%	1,462	20.5%	3.8%
Southeast	1,412	22.9%	15.5%	1,186	19.2%	5.1%	1,055	17.1%	5.8%	1,430	23.2%	0.4%

[†] Degree-seeking only

Undergraduate Enrollment Status[†]

	Full-time Undergrad			Part-time Undergrad		
	Count	% of campus		Count	% of campus	
		total	% change ¹		total	% change ¹
Bloomington	28,018	94.4%	5.4%	1,650	5.6%	2.9%
Indianapolis	13,724	70.8%	6.0%	5,670	29.2%	-3.7%
East	1,352	64.8%	18.1%	735	35.2%	-2.0%
Fort Wayne*	3,834	68.8%	8.7%	1,740	31.2%	-6.4%
Kokomo	1,260	60.8%	-4.7%	813	39.2%	-3.9%
Northwest	2,412	63.4%	13.0%	1,392	36.6%	-6.0%
South Bend	3,475	63.0%	8.5%	2,037	37.0%	7.2%
Southeast	3,220	63.3%	10.2%	1,863	36.7%	0.7%



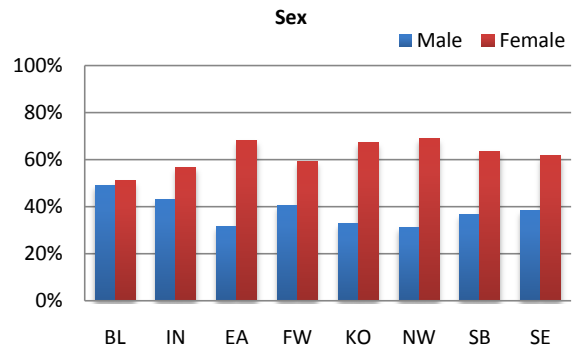
¹ Compared with Second Semester, 2007-08

* IU students only

Campus Enrollment Summary

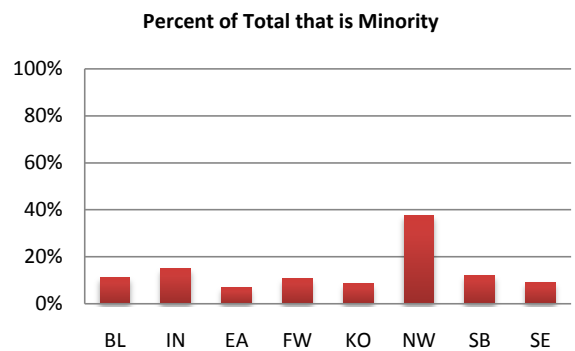
Sex

	Male			Female		
	Count	% of campus		Count	% of campus	
		total	change ¹		total	change ¹
Bloomington	18,932	49.0%	4.5%	19,667	51.0%	2.3%
Indianapolis	12,578	43.2%	5.8%	16,548	56.8%	1.9%
East	755	31.7%	11.2%	1,627	68.3%	9.0%
Fort Wayne*	2,667	40.6%	3.8%	3,900	59.4%	5.9%
Kokomo	823	32.8%	5.5%	1,687	67.2%	-5.3%
Northwest	1,444	31.0%	8.7%	3,212	69.0%	2.9%
South Bend	2,619	36.7%	6.9%	4,523	63.3%	7.6%
Southeast	2,375	38.5%	6.9%	3,798	61.5%	5.4%



Ethnicity

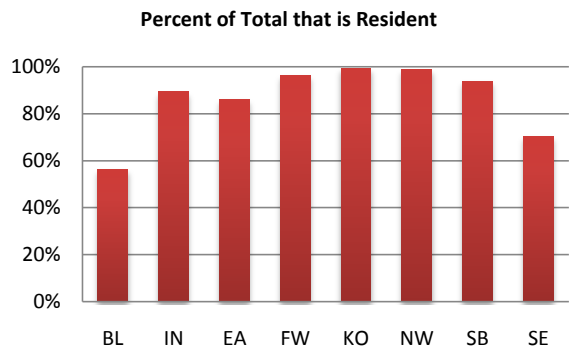
	Domestic Minority			Other		
	Count	% of campus		Count	% of campus	
		total	change ¹		total	change ¹
Bloomington	4,322	11.2%	8.1%	34,277	88.8%	2.8%
Indianapolis	4,429	15.2%	5.2%	24,697	84.8%	3.2%
East	164	6.9%	17.1%	2,218	93.1%	9.2%
Fort Wayne*	711	10.8%	12.1%	5,856	89.2%	4.2%
Kokomo	217	8.6%	4.3%	2,293	91.4%	-2.6%
Northwest	1,757	37.7%	3.4%	2,899	62.3%	5.5%
South Bend	872	12.2%	3.9%	6,270	87.8%	7.8%
Southeast	558	9.0%	17.2%	5,615	91.0%	5.0%



	African American			American Indian			Asian American			Hispanic		
	Count	% of campus		Count	% of campus		Count	% of campus		Count	% of campus	
		total	change ¹		total	change ¹		total	change ¹		total	change ¹
Bloomington	1,685	4.4%	4.9%	117	0.3%	12.5%	1,528	4.0%	12.8%	992	2.6%	6.4%
Indianapolis	2,521	8.7%	3.2%	72	0.2%	-10.0%	1,109	3.8%	12.6%	727	2.5%	3.9%
East	102	4.3%	18.6%	4	0.2%	-50.0%	18	0.8%	20.0%	40	1.7%	29.0%
Fort Wayne*	393	6.0%	12.9%	24	0.4%	41.2%	102	1.6%	10.9%	192	2.9%	8.5%
Kokomo	134	5.3%	12.6%	14	0.6%	-17.6%	27	1.1%	-30.8%	42	1.7%	27.3%
Northwest	1,056	22.7%	-0.7%	23	0.5%	-11.5%	88	1.9%	-2.2%	590	12.7%	13.2%
South Bend	466	6.5%	1.1%	23	0.3%	-32.4%	95	1.3%	4.4%	288	4.0%	13.8%
Southeast	361	5.8%	20.3%	26	0.4%	30.0%	79	1.3%	0.0%	92	1.5%	19.5%

Residency

	Resident			Non-resident		
	Count	% of campus		Count	% of campus	
		total	change ¹		total	change ¹
Bloomington	21,673	56.1%	2.0%	16,926	43.9%	5.1%
Indianapolis	26,022	89.3%	2.0%	3,104	10.7%	18.4%
East	2,048	86.0%	8.7%	334	14.0%	16.0%
Fort Wayne*	6,330	96.4%	5.1%	237	3.6%	3.0%
Kokomo	2,492	99.3%	-2.2%	18	0.7%	28.6%
Northwest	4,600	98.8%	4.8%	56	1.2%	-6.7%
South Bend	6,694	93.7%	7.6%	448	6.3%	4.2%
Southeast	4,346	70.4%	4.6%	1,827	29.6%	9.2%



¹ Compared with Second Semester, 2007-08

* IU students only

