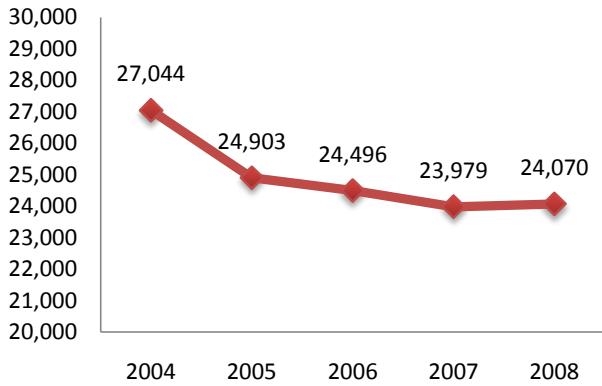
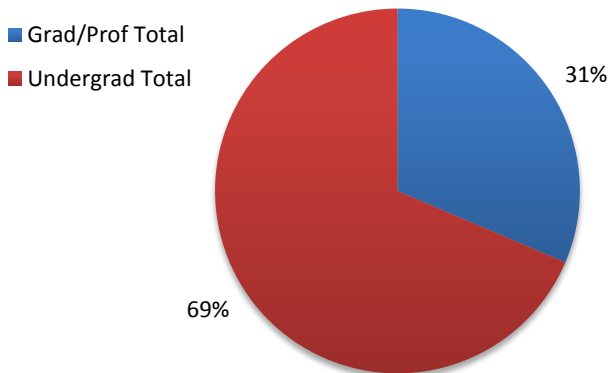
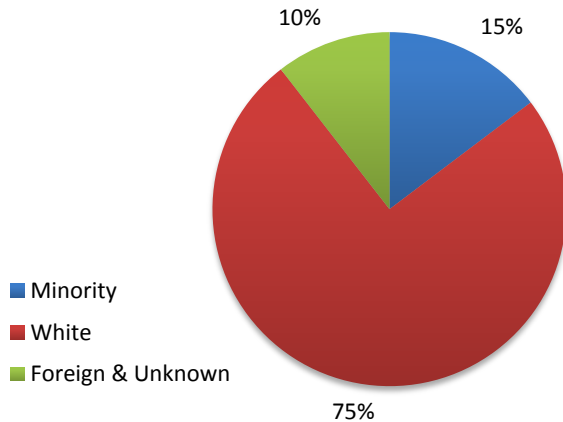


**IU Historical Enrollment
Second Summer Session**

IU Enrollment By Level

IU Enrollment By Ethnicity

University Enrollment Summary

	Count	% of total	% change ¹
Headcount	24,070		0.4%
Credit Hours	96,533.0		1.1%
FTE	6,887.6		1.1%

Students By Level and Class

Undergrad Total	16,511	68.6%	0.9%
Degree-seeking	14,636	60.8%	1.3%
Non-Degree	1,875	7.8%	-2.3%
Grad/Prof Total	7,559	31.4%	-0.7%
Grad Degree-seeking	5,313	22.1%	1.1%
Prof Degree-seeking	379	1.6%	-15.0%
Non-Degree	1,867	7.8%	-2.3%

Freshman	2,008	13.7%	-4.1%
Sophomore	2,785	19.0%	-0.9%
Junior	3,420	23.4%	3.2%
Senior	6,423	43.9%	3.0%

Undergraduates By Courseload²

FT-UG	4,520	30.9%	1.7%
PT-UG	10,116	69.1%	1.1%

Sex

Male	9,784	40.6%	2.1%
Female	14,286	59.4%	-0.7%

Ethnicity

African American	2,014	8.4%	-2.1%
American Indian	67	0.3%	-24.7%
Asian	773	3.2%	1.8%
Hispanic	685	2.8%	4.3%
White	18,000	74.8%	-1.2%
Foreign	1,670	6.9%	17.9%
Unknown	861	3.6%	11.0%

Residency

Resident	18,842	78.3%	-1.4%
Non-Resident	5,228	21.7%	7.6%
Reciprocity ³	711	13.6%	1.6%

¹ Compared with Second Summer Session, 2007

² Degree-seeking only

³ Portion of non-resident enrollments that are reciprocity

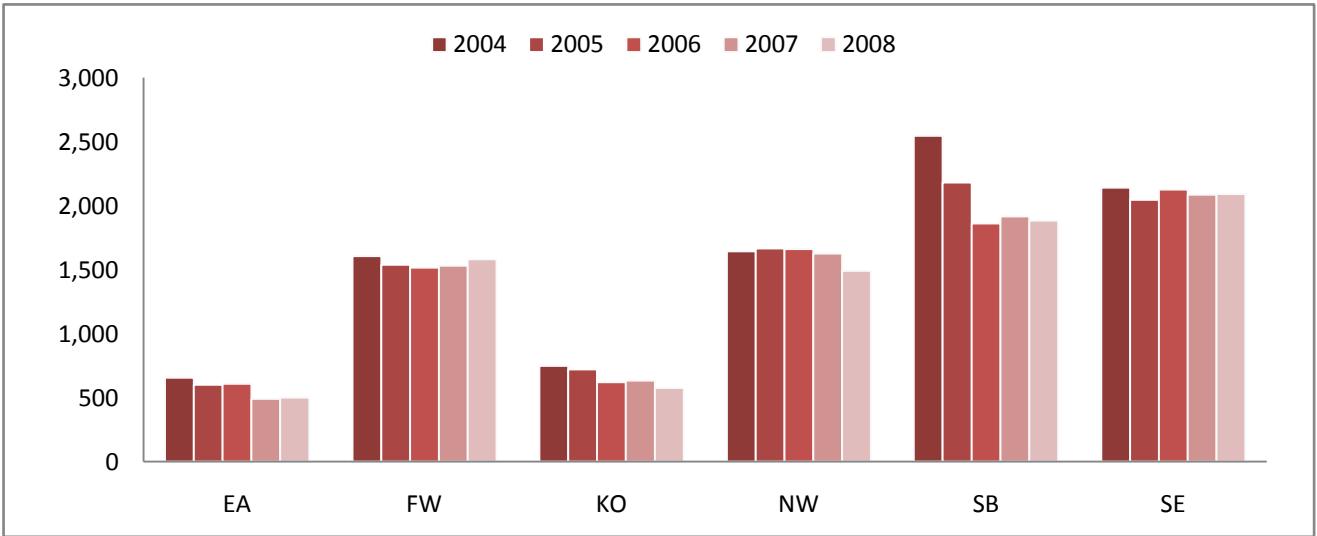
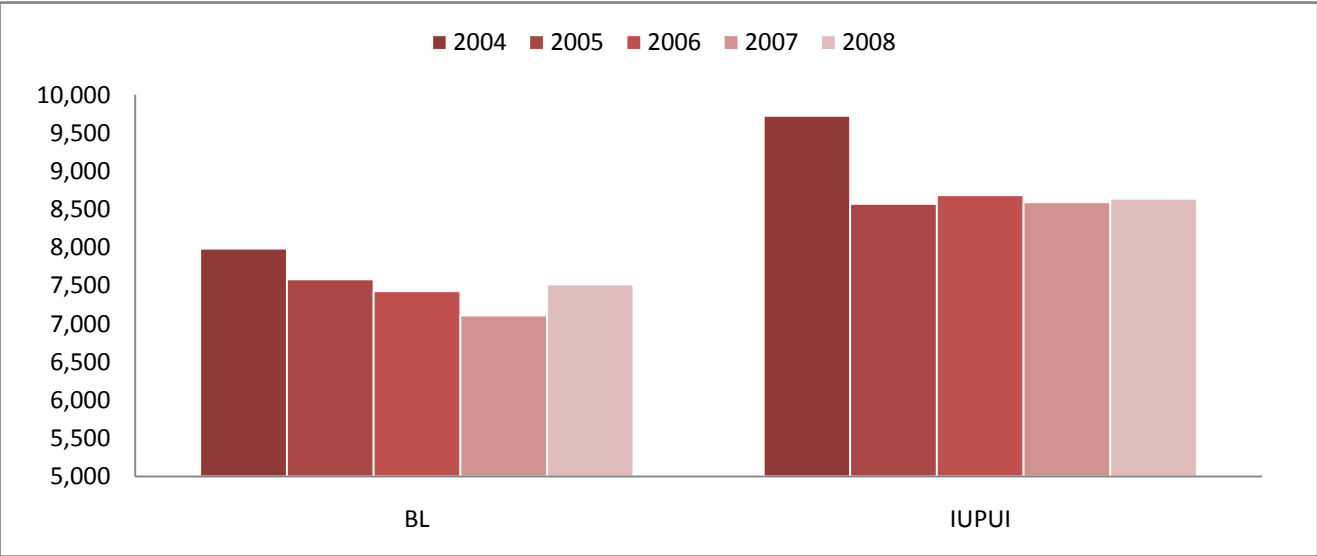
Campus Enrollment Summary

	Headcount			Credit Hours			FTE		
	Count	%	%	Count	%	%	Count	%	%
		of total	change ¹		of total	change ¹		of total	change ¹
Bloomington	7,315	30.4%	2.9%	30,532.0	31.6%	2.6%	2,199.0	31.9%	3.0%
Indianapolis	8,638	35.9%	0.5%	34,121.0	35.3%	2.3%	2,433.0	35.3%	2.2%
East	499	2.1%	2.0%	2,129.0	2.2%	7.0%	146.9	2.1%	8.8%
Fort Wayne*	1,580	6.6%	3.2%	6,117.0	6.3%	5.7%	435.8	6.3%	4.6%
Kokomo	576	2.4%	-9.0%	2,264.0	2.3%	-4.8%	154.9	2.2%	-4.4%
Northwest	1,491	6.2%	-8.2%	6,096.0	6.3%	-8.3%	429.4	6.2%	-8.3%
South Bend	1,882	7.8%	-1.8%	7,132.0	7.4%	-2.4%	505.8	7.3%	-3.3%
Southeast	2,089	8.7%	0.2%	8,142.0	8.4%	-1.9%	582.9	8.5%	-1.0%

¹ Compared with Second Summer Session, 2007

* IU students only

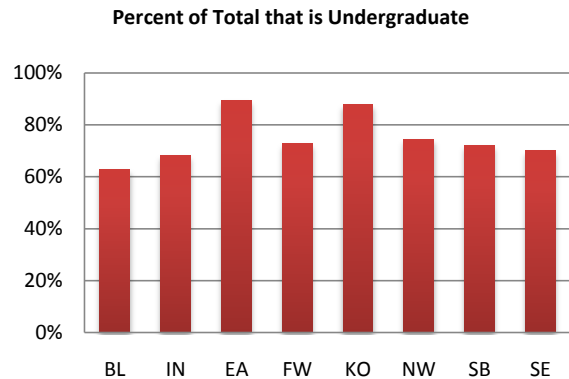
Campus Historical Second Summer Session Enrollment



Campus Enrollment Summary

Level of Enrollment (including non-degree)

	Undergraduate			Graduate/Professional		
	Count	% of campus		Count	% of campus	
		total	% change ¹		total	% change ¹
Bloomington	4,586	62.7%	1.7%	2,729	37.3%	5.0%
Indianapolis	5,890	68.2%	2.3%	2,748	31.8%	-3.1%
East	447	89.6%	-0.2%	52	10.4%	26.8%
Fort Wayne*	1,150	72.8%	9.4%	430	27.2%	-10.4%
Kokomo	506	87.8%	-11.5%	70	12.2%	14.8%
Northwest	1,110	74.4%	-6.5%	381	25.6%	-13.0%
South Bend	1,360	72.3%	3.0%	522	27.7%	-12.3%
Southeast	1,462	70.0%	-4.1%	627	30.0%	11.8%



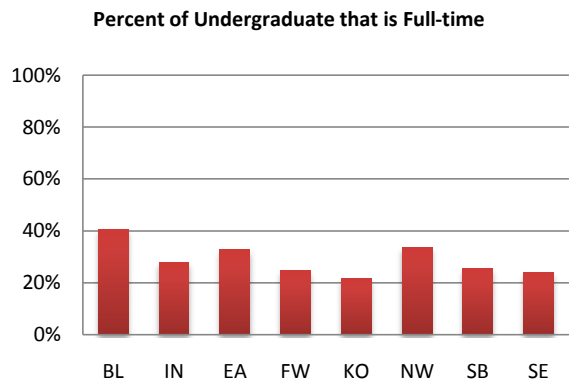
Undergraduates by Class[†]

	Freshman			Sophomore			Junior			Senior		
	Count	% of campus		Count	% of campus		Count	% of campus		Count	% of campus	
		total	% change ¹		total	% change ¹		total	% change ¹		total	% change ¹
Bloomington	667	16.7%	4.2%	443	11.1%	-3.1%	1,098	27.6%	6.4%	1,777	44.6%	-3.2%
Indianapolis	418	8.1%	-0.2%	1,026	19.8%	0.7%	1,179	22.7%	4.0%	2,568	49.5%	9.1%
East	97	23.1%	-9.3%	90	21.4%	-15.1%	103	24.5%	18.4%	130	31.0%	10.2%
Fort Wayne*	170	10.8%	-10.5%	260	16.5%	14.5%	236	14.9%	15.1%	415	26.3%	14.0%
Kokomo	74	12.8%	-23.7%	111	19.3%	-30.6%	88	15.3%	-15.4%	179	31.1%	17.0%
Northwest	169	11.3%	-18.4%	297	19.9%	2.8%	212	14.2%	-11.7%	347	23.3%	-7.2%
South Bend	227	12.1%	1.3%	266	14.1%	0.4%	182	9.7%	-7.6%	444	23.6%	4.5%
Southeast	186	8.9%	-11.0%	292	14.0%	2.1%	322	15.4%	2.5%	563	27.0%	-7.7%

[†] Degree-seeking only

Undergraduate Enrollment Status[†]

	Full-time Undergrad			Part-time Undergrad		
	Count	% of campus		Count	% of campus	
		total	% change ¹		total	% change ¹
Bloomington	1,617	40.6%	-1.8%	2,368	59.4%	2.2%
Indianapolis	1,441	27.8%	5.8%	3,750	72.2%	5.2%
East	137	32.6%	9.6%	283	67.4%	-3.4%
Fort Wayne*	266	24.6%	22.6%	815	75.4%	6.0%
Kokomo	98	21.7%	-1.0%	354	78.3%	-14.7%
Northwest	346	33.8%	-8.5%	679	66.2%	-7.2%
South Bend	287	25.6%	5.1%	832	74.4%	-0.7%
Southeast	328	24.1%	-4.7%	1,035	75.9%	-3.7%



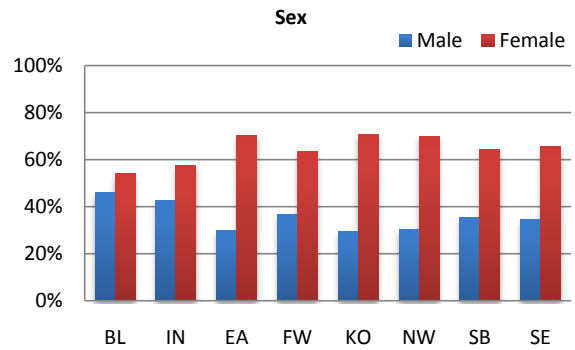
¹ Compared with Second Summer Session, 2007

*IU students only

Campus Enrollment Summary

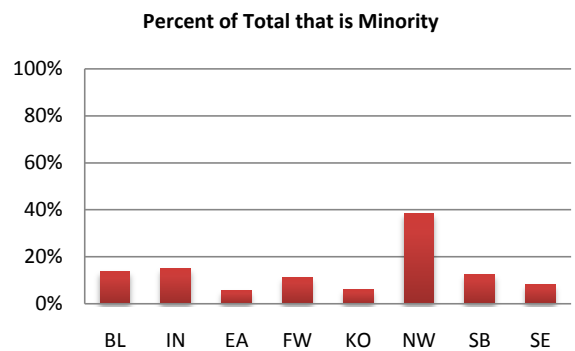
Sex

	Male			Female		
	Count	% of campus		Count	% of campus	
		total	change ¹		total	change ¹
Bloomington	3,368	46.0%	-0.6%	3,947	54.0%	6.1%
Indianapolis	3,678	42.6%	5.4%	4,960	57.4%	-2.8%
East	148	29.7%	8.8%	351	70.3%	-0.6%
Fort Wayne*	579	36.6%	3.8%	1,001	63.4%	2.9%
Kokomo	169	29.3%	-6.6%	407	70.7%	-10.0%
Northwest	452	30.3%	-0.7%	1,039	69.7%	-11.2%
South Bend	669	35.5%	4.2%	1,213	64.5%	-4.8%
Southeast	721	34.5%	-2.2%	1,368	65.5%	1.5%



Ethnicity

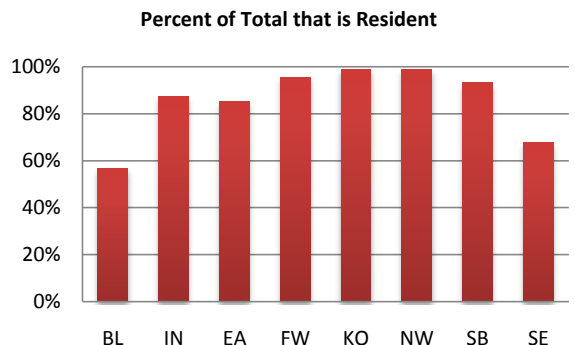
	Domestic Minority			Other		
	Count	% of campus		Count	% of campus	
		total	change ¹		total	change ¹
Bloomington	1,007	13.8%	1.9%	6,308	86.2%	3.1%
Indianapolis	1,306	15.1%	-1.6%	7,332	84.9%	0.9%
East	29	5.8%	-9.4%	470	94.2%	2.8%
Fort Wayne*	178	11.3%	4.7%	1,402	88.7%	3.0%
Kokomo	35	6.1%	-23.9%	541	93.9%	-7.8%
Northwest	575	38.6%	-3.8%	916	61.4%	-10.8%
South Bend	234	12.4%	-4.5%	1,648	87.6%	-1.4%
Southeast	175	8.4%	11.5%	1,914	91.6%	-0.7%



	African American			American Indian			Asian American			Hispanic		
	Count	% of campus		Count	% of campus		Count	% of campus		Count	% of campus	
		total	change ¹		total	change ¹		total	change ¹		total	change ¹
Bloomington	518	7.1%	5.9%	15	0.2%	-50.0%	280	3.8%	1.8%	194	2.7%	0.0%
Indianapolis	745	8.6%	-3.0%	22	0.3%	-21.4%	349	4.0%	-1.7%	190	2.2%	8.0%
East	16	3.2%	-33.3%	2	0.4%	0.0%	5	1.0%	400.0%	6	1.2%	20.0%
Fort Wayne*	97	6.1%	9.0%	5	0.3%	-37.5%	33	2.1%	0.0%	43	2.7%	7.5%
Kokomo	22	3.8%	-24.1%	5	0.9%	400.0%	4	0.7%	-50.0%	4	0.7%	-50.0%
Northwest	372	24.9%	-7.9%	2	0.1%	-71.4%	40	2.7%	2.6%	161	10.8%	8.8%
South Bend	134	7.1%	-16.3%	10	0.5%	66.7%	32	1.7%	23.1%	58	3.1%	9.4%
Southeast	110	5.3%	15.8%	6	0.3%	-14.3%	30	1.4%	36.4%	29	1.4%	-12.1%

Residency

	Resident			Non-resident		
	Count	% of campus		Count	% of campus	
		total	change ¹		total	change ¹
Bloomington	4,157	56.8%	1.7%	3,158	43.2%	4.5%
Indianapolis	7,544	87.3%	-2.2%	1,094	12.7%	24.0%
East	426	85.4%	2.4%	73	14.6%	0.0%
Fort Wayne*	1,508	95.4%	2.6%	72	4.6%	18.0%
Kokomo	570	99.0%	-9.4%	6	1.0%	50.0%
Northwest	1,471	98.7%	-7.9%	20	1.3%	-28.6%
South Bend	1,753	93.1%	-1.8%	129	6.9%	-1.5%
Southeast	1,413	67.6%	-0.8%	676	32.4%	2.4%



¹ Compared with Second Summer Session, 2007

*IU students only

