

Official Retention and Graduation Rates

Full-time Beginners (FTB) and Bachelor's Intended FTB

3/24/2008

Indiana University

Degrees of Excellence Regional Campus Planning Seminar

Indianapolis, IN

This report provides IU Regional campuses' official fall-to-fall retention rates for the 2002-2006 full-time beginner cohorts and official 150% graduation rates for the 1997-2001 full-time beginner cohorts. The retention and graduation rates presented here were extracted from previously published reports released by University Reporting and Research (<http://www.indiana.edu/~urr/index.shtml>).



**IU Regional Combined
Official Retention and Graduation Rates**

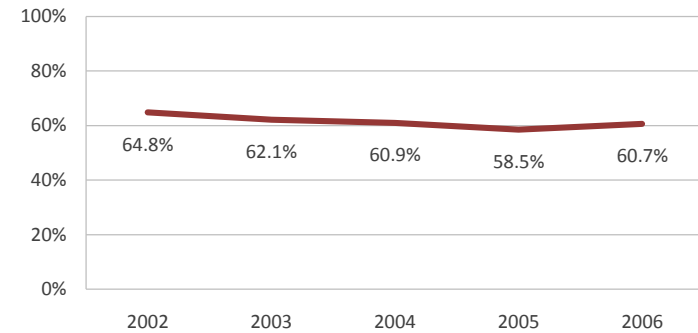
Retention Rates

		Cohort Year				
		2002	2003	2004	2005	2006
Full-time Beginners	Began	2,584	2,746	2,656	2,609	2,623
	Retained	1,674	1,705	1,618	1,526	1,591
	Retention Rate	64.8%	62.1%	60.9%	58.5%	60.7%
Bachelor's Intended FTB	Began	2,189	2,369	2,384	2,400	2,426
	Retained	1,418	1,493	1,463	1,414	1,479
	Retention Rate	64.8%	63.0%	61.4%	58.9%	61.0%

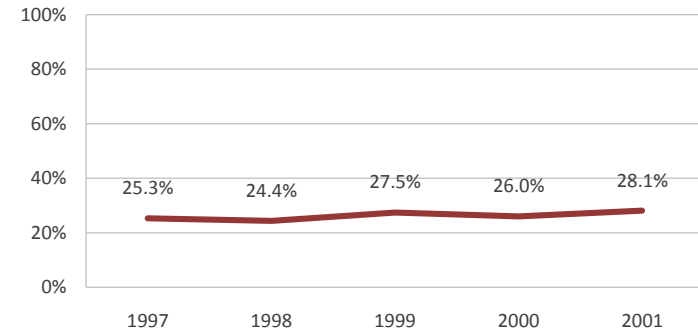
Graduation Rates

		Cohort Year				
		1997	1998	1999	2000	2001
Full-time Beginners	Began	2,362	2,557	2,446	2,450	2,590
	Received Degree	597	624	672	638	728
	Graduation Rate	25.3%	24.4%	27.5%	26.0%	28.1%
Bachelor's Intended FTB	Began	2,025	2,238	2,150	2,191	2,267
	Received Degree	515	522	584	559	625
	Graduation Rate	25.4%	23.3%	27.2%	25.5%	27.6%

**IU Regional Combined Retention Rate Trends for FTB
2002 - 2006 Cohorts**



**IU Regional Combined Graduation Rate Trends for FTB
2002 - 2006 Cohorts**





**IU East
Official Retention and Graduation Rates**

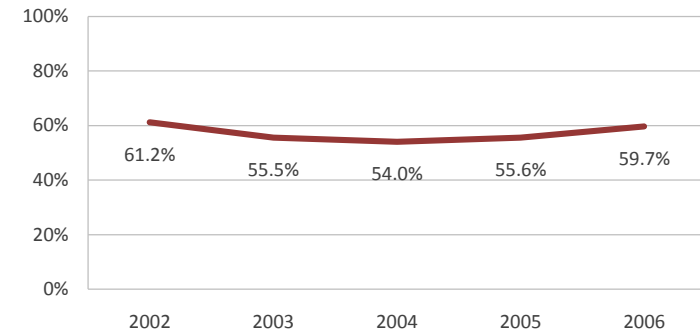
Retention Rates

		Cohort Year				
		2002	2003	2004	2005	2006
Full-time Beginners	Began	304	319	274	284	226
	Retained	186	177	148	158	135
	Retention Rate	61.2%	55.5%	54.0%	55.6%	59.7%
Bachelor's Intended FTB	Began	210	232	230	229	194
	Retained	132	139	123	126	116
	Retention Rate	62.9%	59.9%	53.5%	55.0%	59.8%

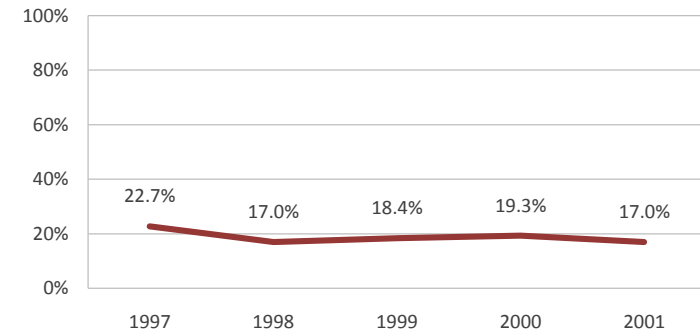
Graduation Rates

		Cohort Year				
		1997	1998	1999	2000	2001
Full-time Beginners	Began	278	230	255	249	264
	Received Degree	63	39	47	48	45
	Graduation Rate	22.7%	17.0%	18.4%	19.3%	17.0%
Bachelor's Intended FTB	Began	195	159	162	172	176
	Received Degree	50	30	32	31	31
	Graduation Rate	25.6%	18.9%	19.8%	18.0%	17.6%

**IU East Retention Rate Trends for FTB
2002 - 2006 Cohorts**



**IU East Graduation Rate Trends for FTB
2002 - 2006 Cohorts**





**IU Kokomo
Official Retention and Graduation Rates**

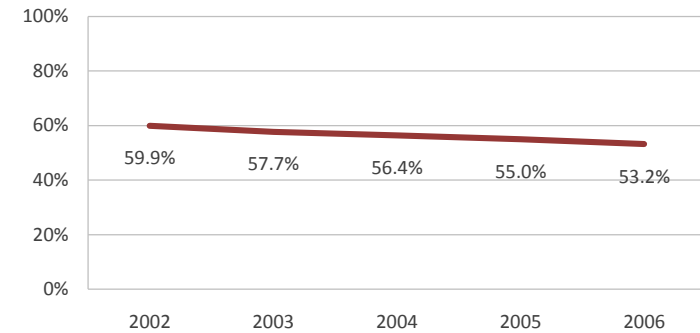
Retention Rates

		Cohort Year				
		2002	2003	2004	2005	2006
Full-time Beginners	Began	339	383	358	382	331
	Retained	203	221	202	210	176
	Retention Rate	59.9%	57.7%	56.4%	55.0%	53.2%
Bachelor's Intended FTB	Began	273	310	325	366	323
	Retained	159	177	181	203	172
	Retention Rate	58.2%	57.1%	55.7%	55.5%	53.3%

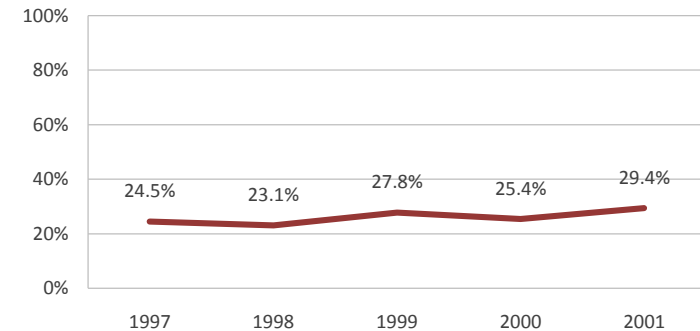
Graduation Rates

		Cohort Year				
		1997	1998	1999	2000	2001
Full-time Beginners	Began	306	333	295	347	343
	Received Degree	75	77	82	88	101
	Graduation Rate	24.5%	23.1%	27.8%	25.4%	29.4%
Bachelor's Intended FTB	Began	263	298	273	316	301
	Received Degree	63	68	76	79	81
	Graduation Rate	24.0%	22.8%	27.8%	25.0%	26.9%

**IU Kokomo Retention Rate Trends for FTB
2002 - 2006 Cohorts**



**IU Kokomo Graduation Rate Trends for FTB
2002 - 2006 Cohorts**





IU Northwest
Official Retention and Graduation Rates

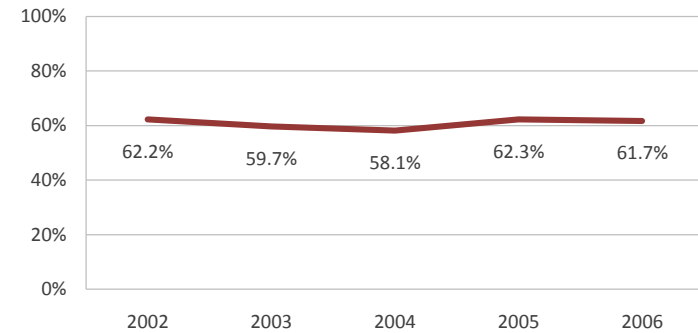
Retention Rates

		Cohort Year				
		2002	2003	2004	2005	2006
Full-time Beginners	Began	603	662	604	472	561
	Retained	375	395	351	294	346
	Retention Rate	62.2%	59.7%	58.1%	62.3%	61.7%
Bachelor's Intended FTB	Began	449	520	506	413	483
	Retained	279	317	302	261	298
	Retention Rate	62.1%	61.0%	59.7%	63.2%	61.7%

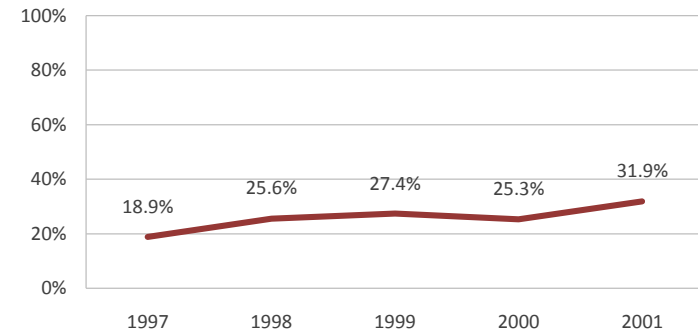
Graduation Rates

		Cohort Year				
		1997	1998	1999	2000	2001
Full-time Beginners	Began	508	536	540	517	511
	Received Degree	96	137	148	131	163
	Graduation Rate	18.9%	25.6%	27.4%	25.3%	31.9%
Bachelor's Intended FTB	Began	371	429	415	396	377
	Received Degree	69	101	113	93	121
	Graduation Rate	18.6%	23.5%	27.2%	23.5%	32.1%

**IU Northwest Retention Rate Trends for FTB
 2002 - 2006 Cohorts**



**IU Northwest Graduation Rate Trends for FTB
 2002 - 2006 Cohorts**





IU South Bend
Official Retention and Graduation Rates

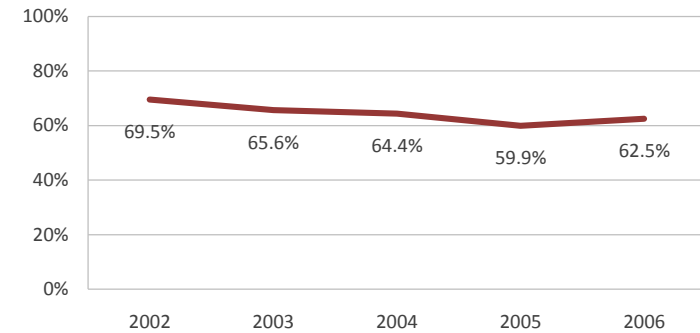
Retention Rates

		Cohort Year				
		2002	2003	2004	2005	2006
Full-time Beginners	Began	659	707	705	806	776
	Retained	458	464	454	483	485
	Retention Rate	69.5%	65.6%	64.4%	59.9%	62.5%
Bachelor's Intended FTB	Began	594	646	619	735	705
	Retained	407	420	402	448	446
	Retention Rate	68.5%	65.0%	64.9%	61.0%	63.3%

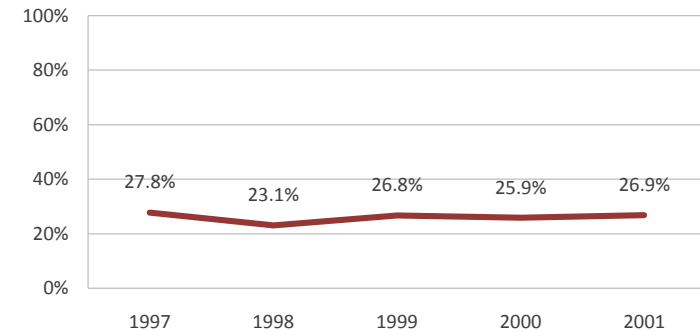
Graduation Rates

		Cohort Year				
		1997	1998	1999	2000	2001
Full-time Beginners	Began	629	732	637	637	750
	Received Degree	175	169	171	165	202
	Graduation Rate	27.8%	23.1%	26.8%	25.9%	26.9%
Bachelor's Intended FTB	Began	562	628	587	612	695
	Received Degree	153	134	149	156	184
	Graduation Rate	27.2%	21.3%	25.4%	25.5%	26.5%

IU South Bend Retention Rate Trends for FTB
2002 - 2006 Cohorts



IU South Bend Graduation Rate Trends for FTB
2002 - 2006 Cohorts





IU Southeast
Official Retention and Graduation Rates

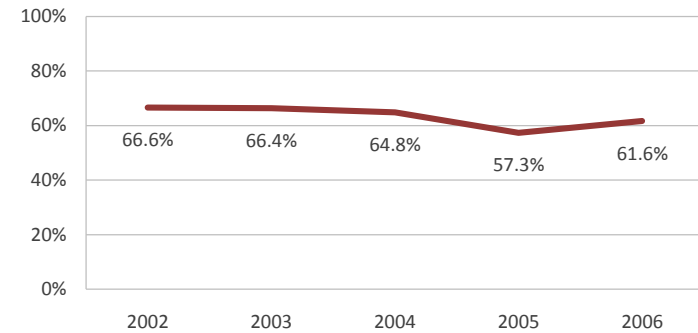
Retention Rates

		Cohort Year				
		2002	2003	2004	2005	2006
Full-time Beginners	Began	679	675	715	665	729
	Retained	452	448	463	381	449
	Retention Rate	66.6%	66.4%	64.8%	57.3%	61.6%
Bachelor's Intended FTB	Began	663	661	704	657	721
	Retained	441	440	455	376	447
	Retention Rate	66.5%	66.6%	64.6%	57.2%	62.0%

Graduation Rates

		Cohort Year				
		1997	1998	1999	2000	2001
Full-time Beginners	Began	641	726	719	700	722
	Received Degree	188	202	224	206	217
	Graduation Rate	29.3%	27.8%	31.2%	29.4%	30.1%
Bachelor's Intended FTB	Began	634	724	713	695	718
	Received Degree	180	189	214	200	208
	Graduation Rate	28.4%	26.1%	30.0%	28.8%	29.0%

**IU Southeast Retention Rate Trends for FTB
 2002 - 2006 Cohorts**



**IU Southeast Graduation Rate Trends for FTB
 2002 - 2006 Cohorts**

