

Windows 7 at IU

Chris England

University Information Technology Services

Indiana University – Bloomington

October 13, 2009



INDIANA UNIVERSITY



INDIANA UNIVERSITY



Windows 7

Install now





INDIANA UNIVERSITY

WHY WINDOWS 7?



Windows Support Lifecycle

Windows OS	Release	Mainstream	Extended
Windows 2000	Mar 2000	June 2005 (NOW)	July 2010
Windows XP	Dec 2001	Apr 2009 (NOW)	Apr 2014
Windows Server 2003	May 2003	July 2010	July 2015
Windows Vista	Jan 2007	Apr 2012	Apr 2017
Windows Server 2008	May 2008 (R2 Oct 2009)	July 2013	July 2018
Windows 7	Oct 2009	Jan 2015	Jan 2020



XP vs Vista

- Improved User Interface
 - Start menu search
 - Sidebar Gadgets
 - Taskbar
- User Account Control (UAC)
- Networking improvements
- Streamlined installation
- Bitlocker drive encryption



New to Windows 7

- Further improved UI
- Improved UAC
- Presentation Mode
- Quickened installation
- HomeGroup concept
- Better hardware support



INDIANA UNIVERSITY

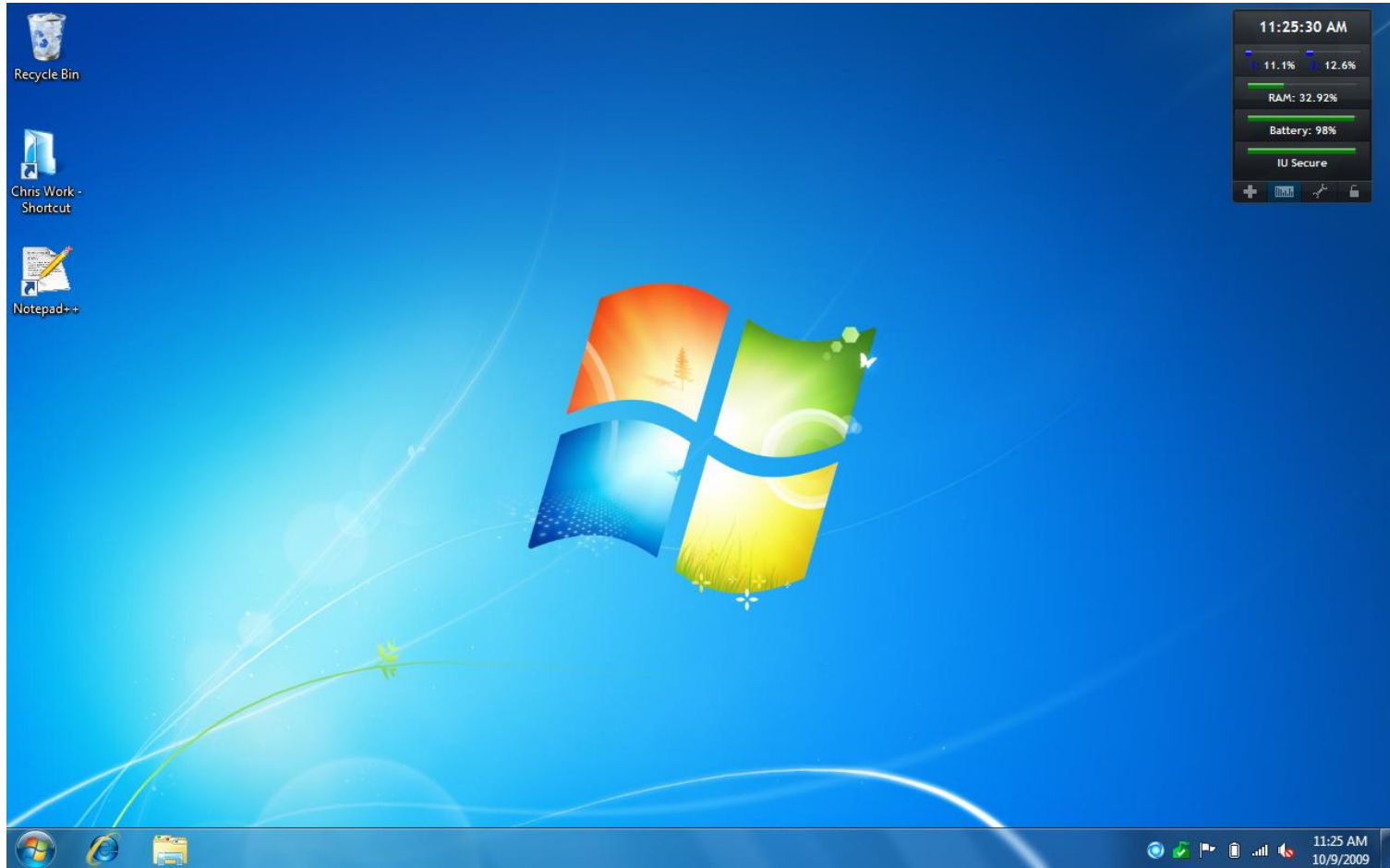
Windows 7 Interface





INDIANA UNIVERSITY

Windows 7 Interface





INDIANA UNIVERSITY

Windows 7 Interface

LIVE DEMO



Requirements

- 1GHz CPU – **Dual-core (Core 2)**
- 1GB RAM – **2GB minimum**
- DirectX 9 video card with 128MB – **256MB**
- 40GB HD – **80-100GB**
- DVD drive
- x86 vs x64?
- Upgrade Advisor
(<http://www.microsoft.com/windows/windows-7/get/upgrade-advisor.aspx>)



Versions

- Starter
- Home Premium
- Professional
- **Ultimate**
- **Enterprise**



Licensing at IU

- For departments and university-owned computers:
 - **Enterprise**
 - KMS vs MAK
- For students and home computers:
 - **Ultimate**
 - Retail Key



Installation caveats

- Clean Install (Recommended)
 - Enterprise: None
 - Ultimate: Must have previous version of Windows (2000, XP, Vista) installed on machine



Installation caveats, part 2

- Upgrade
 - Enterprise: From Vista Enterprise only
 - Ultimate: From any version of Vista BUT Enterprise
 - Must be from 32bit-32bit or 64bit-64bit
 - From XP? **NO**



Installation caveats, part 3

Cases where Ultimate will not install:

- Apple Bootcamp (fresh install)
- New Windows virtual machine
- New/replaced hard drive
- DoD wiped hard drive



AntiVirus Options

- ForeFront Client Security (for departments only at this time)
- Symantec Endpoint Protection 11.0.5
- Microsoft Security Essentials (for home use)



Links

- Microsoft Windows 7
 - <http://www.microsoft.com/windows/windows-7/default.aspx>
 - <http://windowsteamblog.com/>
- KB articles
 - **About:** <http://kb.iu.edu/data/ayrx.html>
 - **What's New:** <http://kb.iu.edu/data/ayvf.html>
 - **Issues:** <http://kb.iu.edu/data/ayrz.html>
- IUware for users
 - <http://iuware.iu.edu/title.aspx?id=1126>
- IUware for LSPs
 - <http://iuware.iu.edu/title.aspx?id=1082> (x86)
 - <http://iuware.iu.edu/title.aspx?id=1083> (x64)



Contact me

- Chris England
- Windows 7 Readiness Team Lead
- LSP Services Team Lead
- chenglan@indiana.edu
- 812-855-4837